

North Clad[®]

rainscreen solutions

All Products Brochure

AL

A
CM

EF

ZN

CL

DS

AL

The AL Series AL-DI Aluminum Dual Interlocking System



Interlocks vertically and horizontally for simple installation

Can fasten directly to framing

No butyl tape or sealant

PVDF Kynar® paint for long term color retention

Up to 20 - year finish warranty available

Available in .050", .063", and .080" thick aluminum

Complete pressure equalized rainscreen system

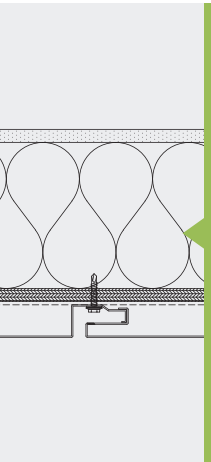
Back - vented rainscreen design for a high - performance building envelope

Proven flashing and installation details, product literature, and guide specifications available at www.northclad.com

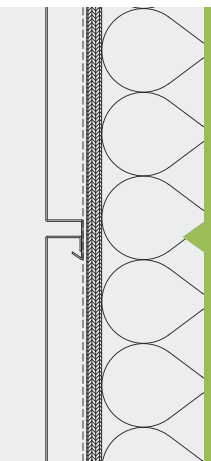
Tested for air, water, and structural performance in compliance with ASTM 283, ASTM 330, ASTM 331, and AAMA 508 - 7

Made in the USA

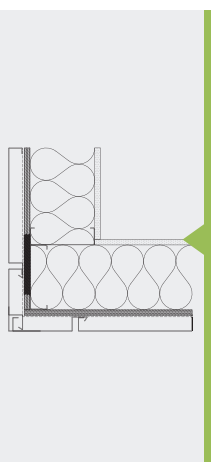
Horizontal Joint



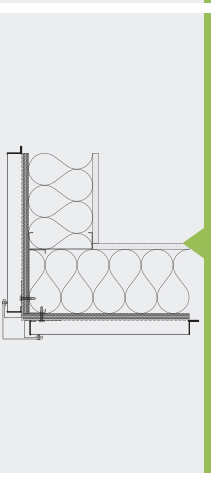
Vertical Joint

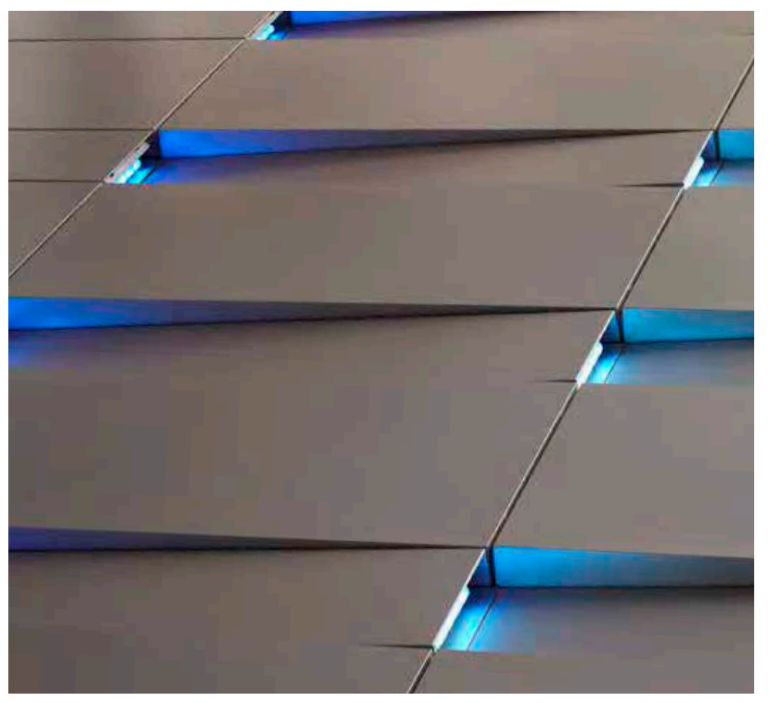
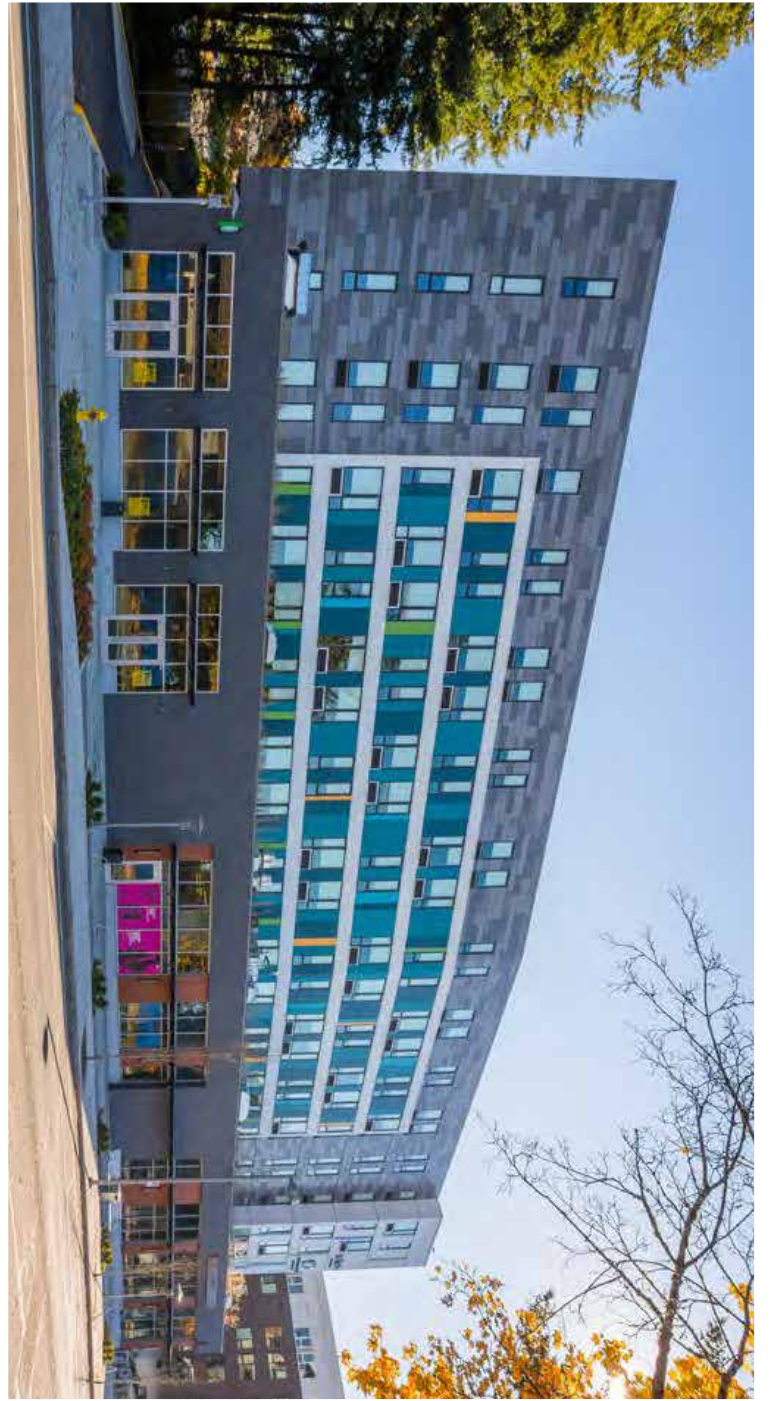
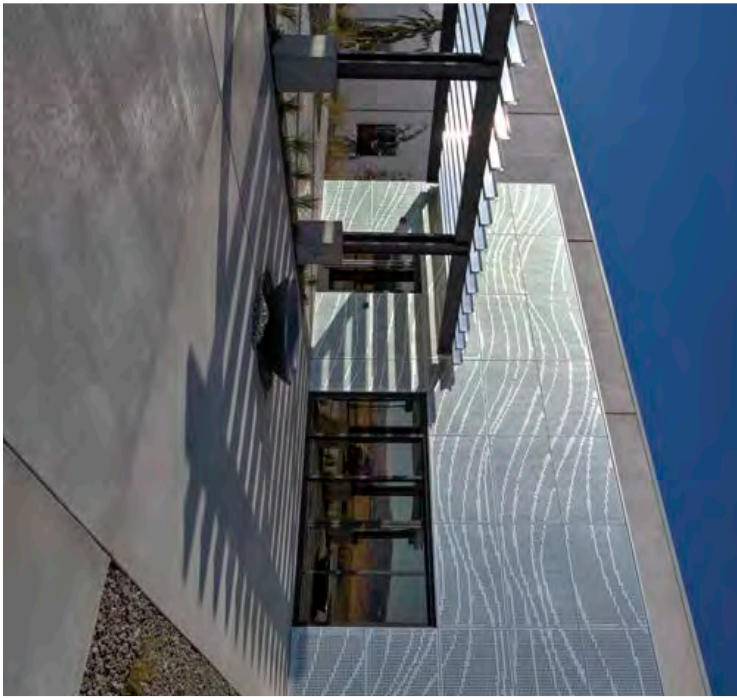


Outside Corner without Trim



Outside Corner with Trim

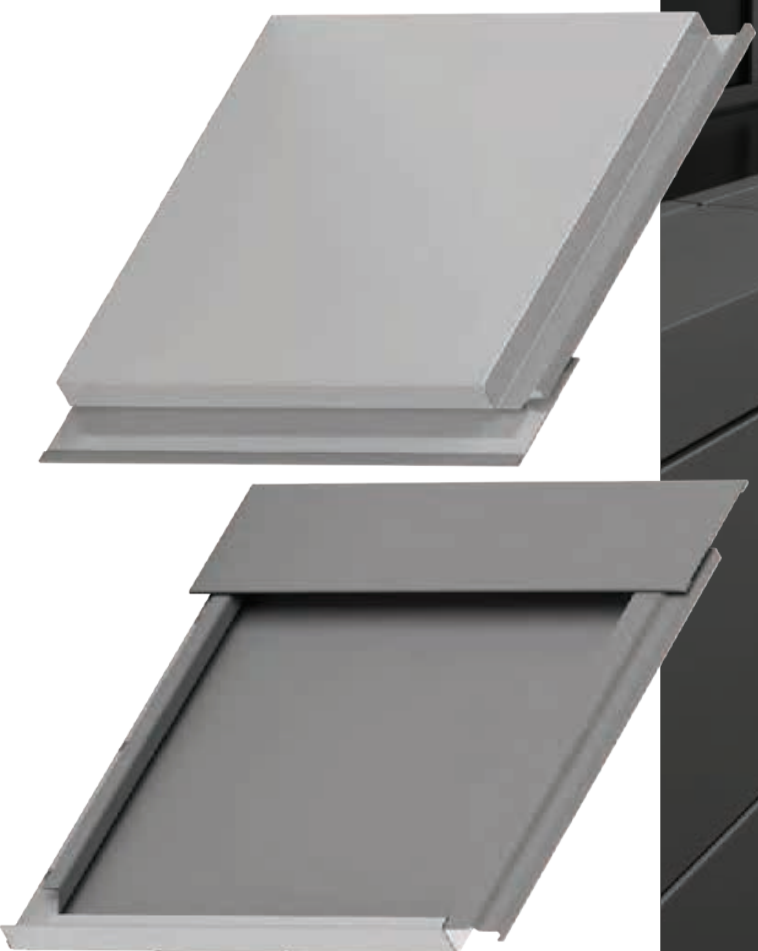




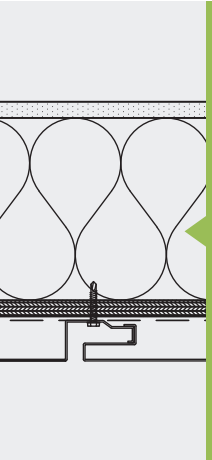
AL

The AL Series AL-VS Aluminum Vertical Stacking System

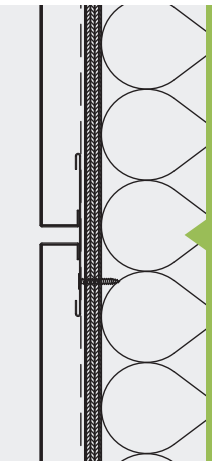
- Panels interlock only vertically allowing for greater flexibility during installation
- Complete back vented rainscreen system
- Up to 20-year finish warranty available
- CNC fabricated to precise dimensions
- Available in .050", .063" and .080" thick aluminum
- PVDF (Kynar®/Hylar®) paint for long term color retention
- Tested for air, water and structural performance in compliance with ASTM 283, ASTM 330, ASTM 331, and AAMA 508-07
- Flashing at vertical reveals in 10'-0" segments
- Made in the USA



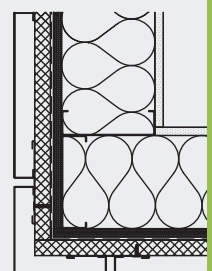
Horizontal Joint



Vertical Joint

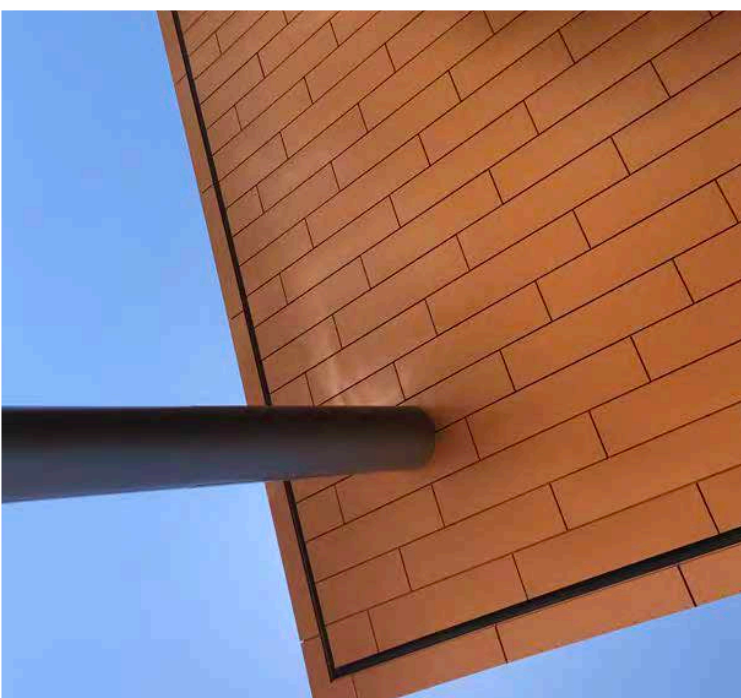


Outside Corner



Inside Corner

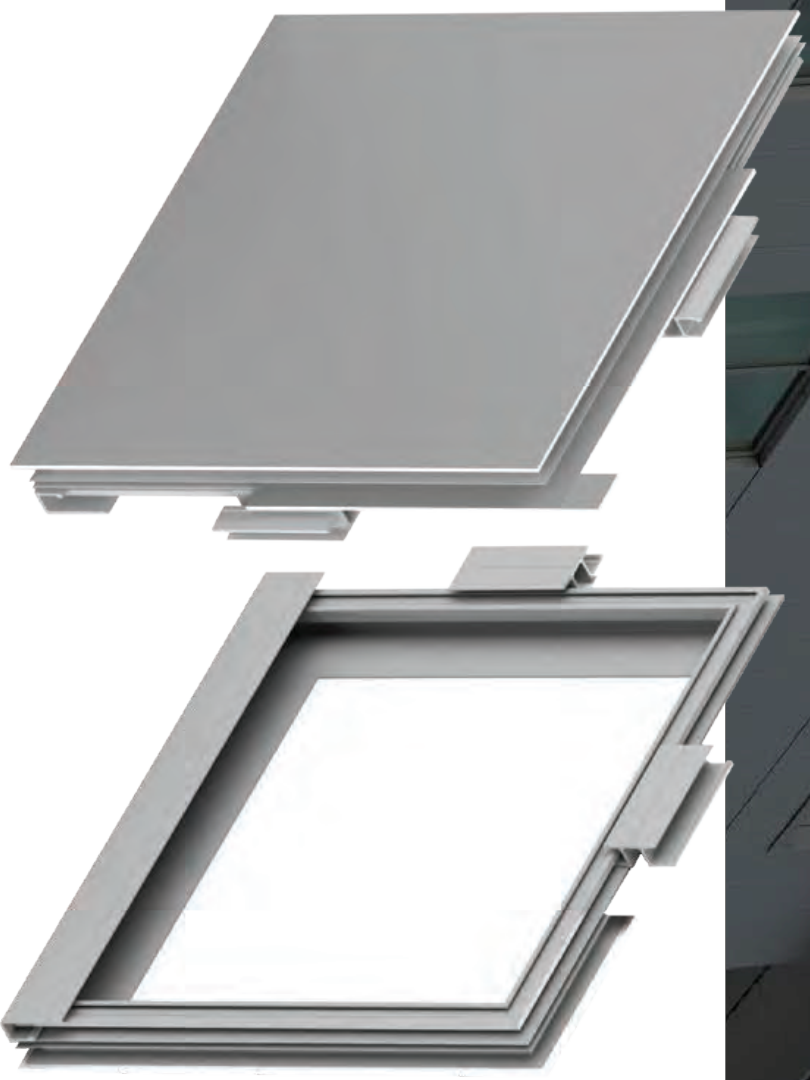




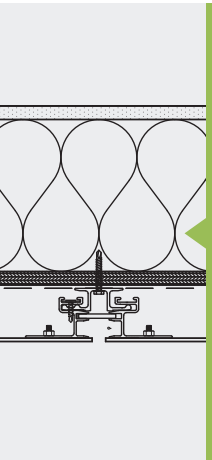
AL

The AL Series AL-PF Aluminum Plate Floating System

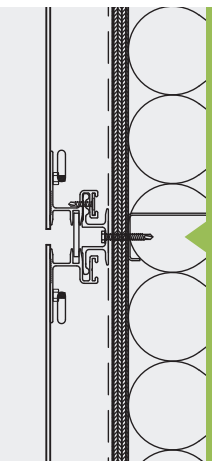
- Solid 1/8" aluminum face that is high impact resistant and cannot delaminate
- Also available in 3/16" thick aluminum
- Made from non-combustible materials
- Panels are 100% Recyclable in mainstream recycling
- 5000 and 3000 series alloys available for panel face
- System frame and components are extruded from 6063-T6 extruded aluminum
- Tested and passed AAMA 508-14 as a Pressure Equalized Rain Screen System
- Designed to control moisture in the wall cavity
- Available in Several Finishes including Kynar, Anodized, Wood Grain, and custom colors
- Standard panels up to 5' x 12' - larger sizes are also available
- Made in the USA
- See our design guide for details and specifications



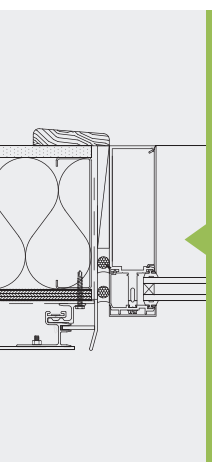
Horizontal Joint



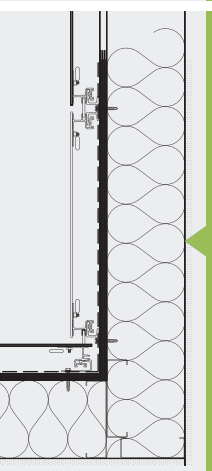
Vertical Joint

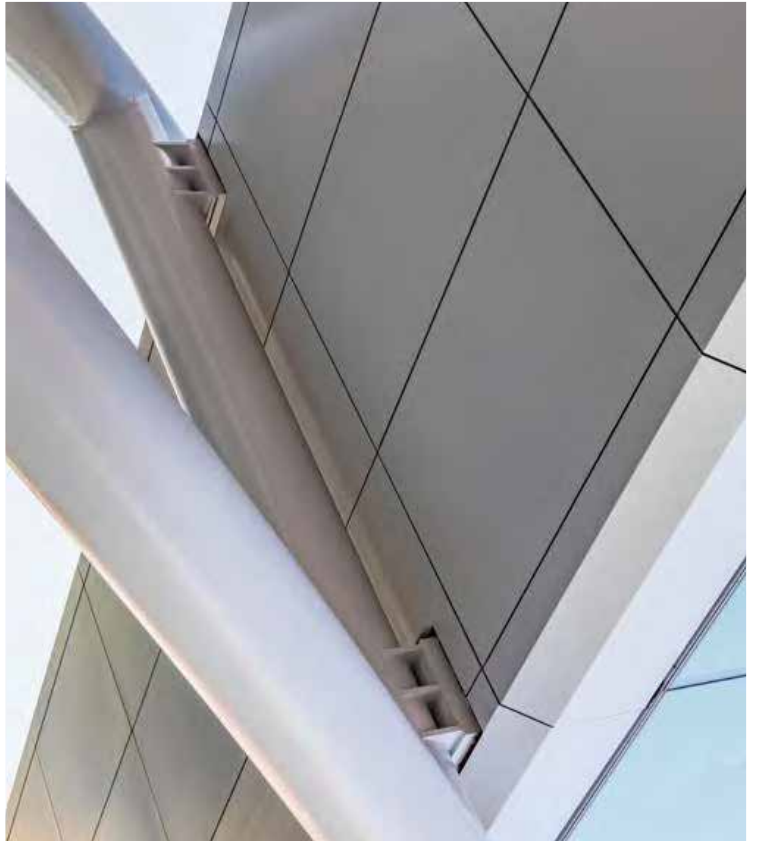


Top of Panel at Window Sill



Bottom of Panel at Window Head

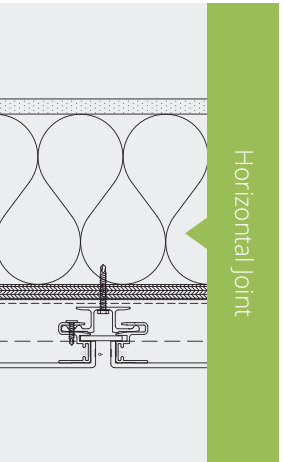




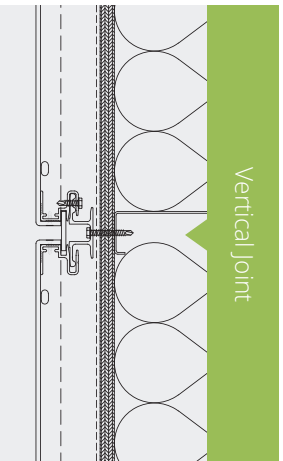
AL

The AL Series AL-PR Aluminum Plate Return System

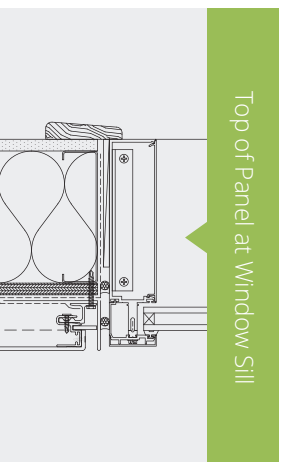
- Solid 1/8" aluminum face that is high impact resistant and cannot delaminate
- Also available in 3/16" thick aluminum
- Made from non-combustible materials
- Tested and passed AAMA 508-14 as a Pressure Equalized Rain Screen System
- Designed to control moisture in the wall cavity
- Solid Aluminum panel face with 1/8" thick 5052 material
- System frame and components are extruded from 6063-T6 aluminum
- Available in several finishes including Kynar, Anodized, Wood Grain, and Custom colors
- Panels are 100% recyclable in mainstream recycling
- Standard panels up to 4'10" x 11'10" - larger sizes are also available
- Manufactured in one of the most sophisticated sheet metal facilities in the United States
- Over 30 years of manufacturing experience
- Made in the USA



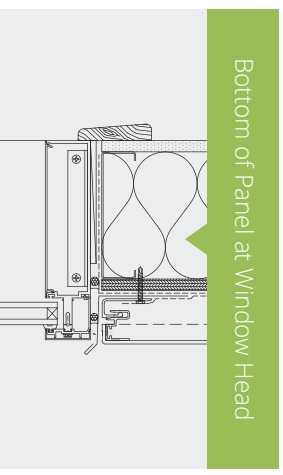
Horizontal Joint



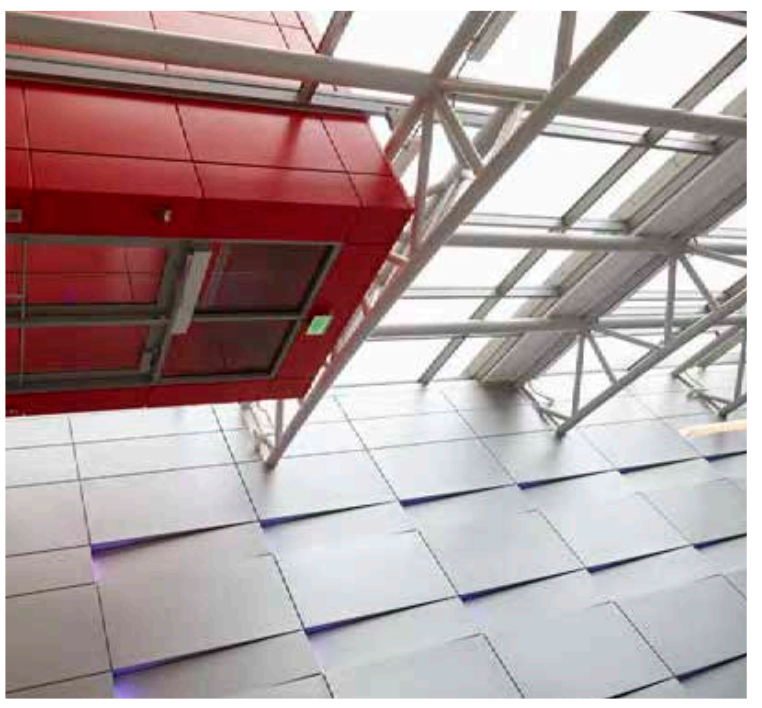
Vertical Joint

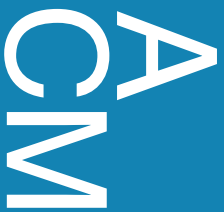


Top of Panel at Window Sill



Bottom of Panel at Window Head





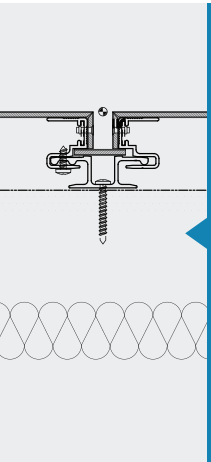
The ACM Series Aluminum Composite Panel System

When your design vision requires sleek, smooth expanses of metal with minimal reveals, you need NorthClad® ACM.

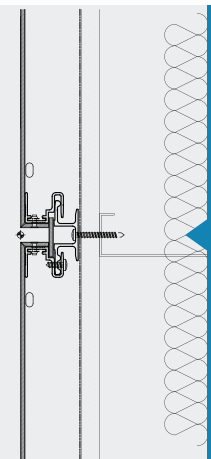


- Panel system consists of ACM and NorthClad® extrusions
- NorthClad® ACM Series panels feature a drained, ventilated rainscreen design
- See our design guide for details and specifications
- Aluminum composite material (ACM) consists of 2 layers of aluminum sandwiching a resin core
- Fire rated cores are also available
- Panels feature coil - coated Kynar® paint for a 20 - 30 - year finish
- 4mm and 6mm cores available
- The NorthClad® extrusion attachment system is engineered to provide superior wind uplift resistance and accommodate thermal expansion
- NorthClad® utilizes ACM from Larson®, Arconic®, Alcotex®, Alpollic®, Citadel®, and others allowing for a wide variety of standard color and natural metal finish choices
- Contact us for detailing assistance and a custom fit and look on your building with panel sizes up to 16' x 5'
- Made in the USA

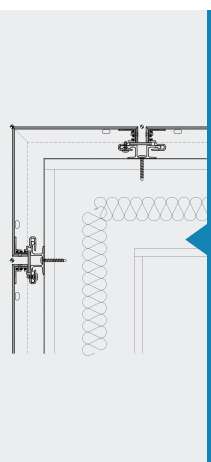
Horizontal joint



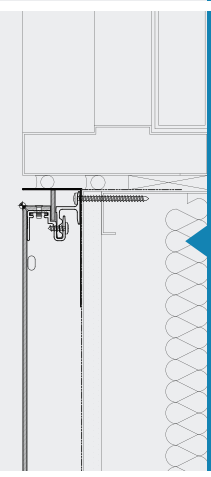
Vertical joint

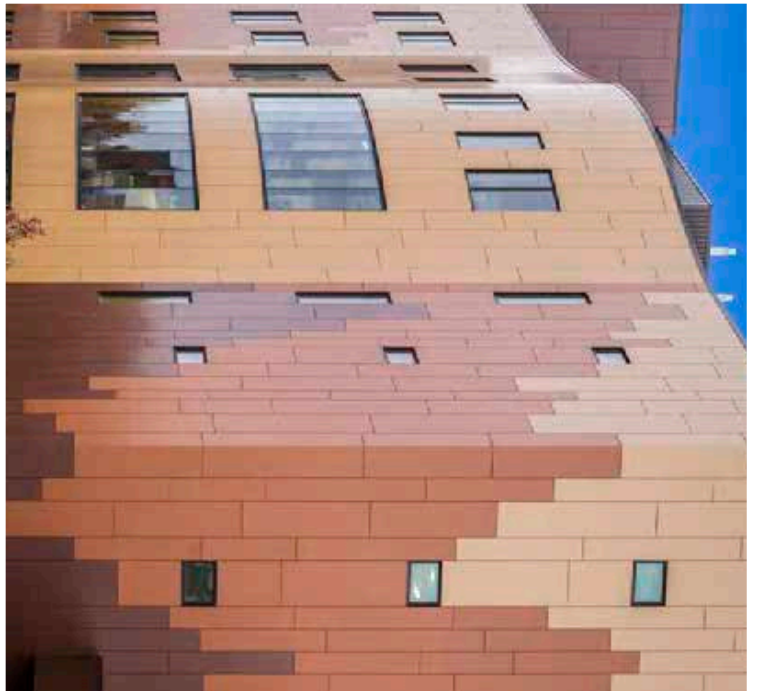


Outside Corner



Door Jamb Right





EF

The EF Series Exposed Fastener Rainscreen System

Colors, gloss levels, and finish textures can be tuned to meet your specific project requirements. Fastener patterns and finishes can be adjusted to contrast or blend in. EF Series panels are not limited to perpendicular edges - curves and abstract shapes are possible.



- Extruded aluminum subgirts continuous at joints providing support and drainage
- Use stainless steel fasteners to create a unique look (fasteners available in a variety of colors)

Integral prefinished aluminum flashing run the entire width of each panel providing additional protection from wind-driven rain at horizontal joints

Panels available in a variety of rigid, weather resistant materials (multiple color, finish, material and texture options available)

Panels are individually removable

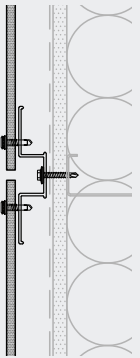
STRONG. Don't take unnecessary risk by mounting your wall system to anything but high strength, extruded aluminum channel.

SMART. The NorthClad® EF Series is engineered to minimize routing and forming providing significant cost savings.

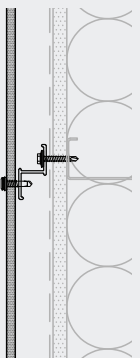
TESTED. The NorthClad® EF Series panel system is engineered and tested to meet stringent air, water, and structural performance requirements per ASTM 283, 330, and 331.

CAPABLE. Colors, gloss levels, and finish textures can be tuned to meet your specific project requirements. Fastener patterns and finishes can be adjusted to contrast or blend in.

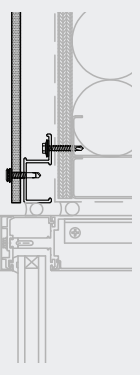
Vertical
Joint



Vertical
Fastener



Window
Jamb



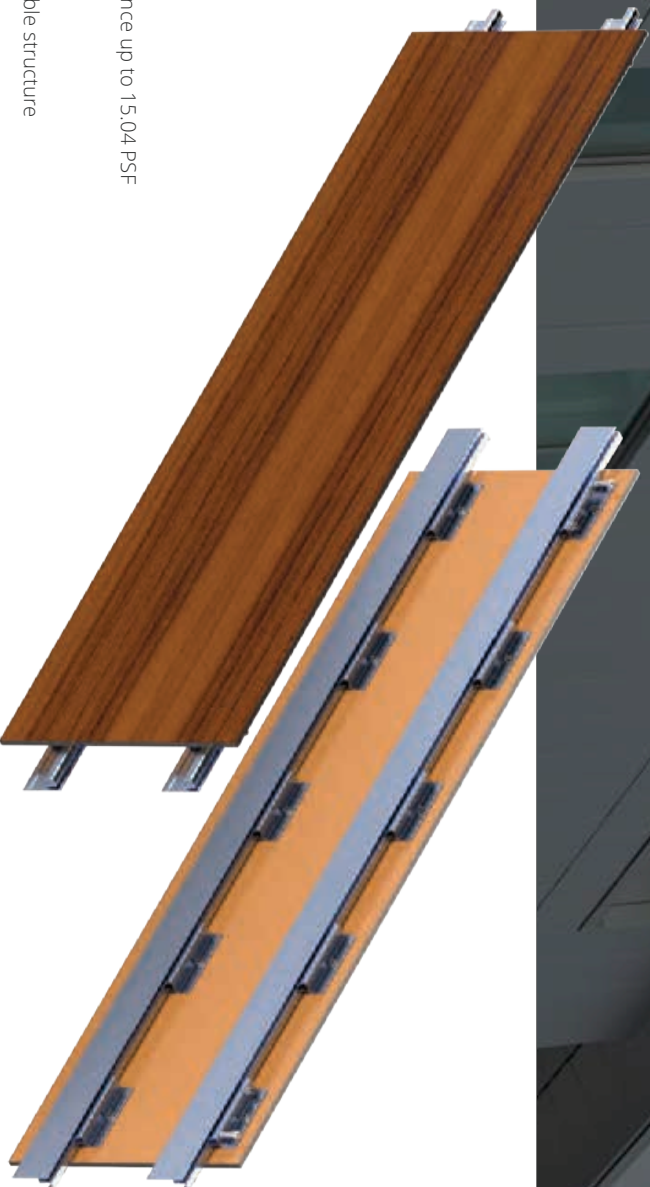


CF

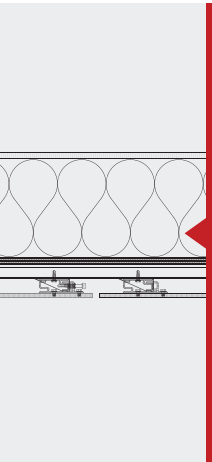
The CF Series Concealed Fastener

Phenolic panel system with factory or field cut edges; utilizing continuous horizontally oriented structural extruded aluminum rail, panel mounted clips and formed closures, with a minimum system depth of 2" plus the thickness of desired panels.

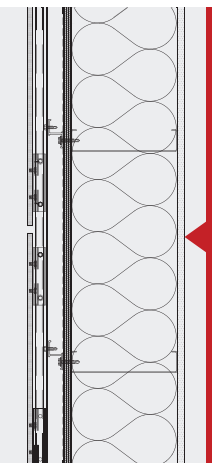
- Dry joint, rainscreen, wall panels
- Available for phenolic material
- ½" joints horizontally and vertically
- Tested to meet AAMA 501 requirements with uncontrolled water infiltration resistance up to 15.04 PSF
- Structural load tested, per ASTM E 330 - 2, with a negative load of 50.13 psf
- System can be mounted on any waterproofed substrate with attachment to a suitable structure
- Standard system details for installation with building insulation either to the exterior of sheathing or within the stud cavity, available in either AutoCAD or PDF formats
- Panels machined using a CNC gantry router



Horizontal Joint



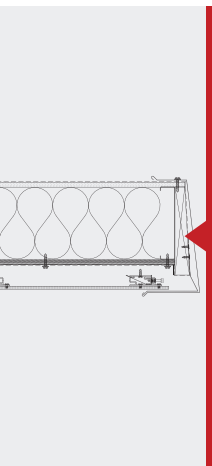
Vertical Joint

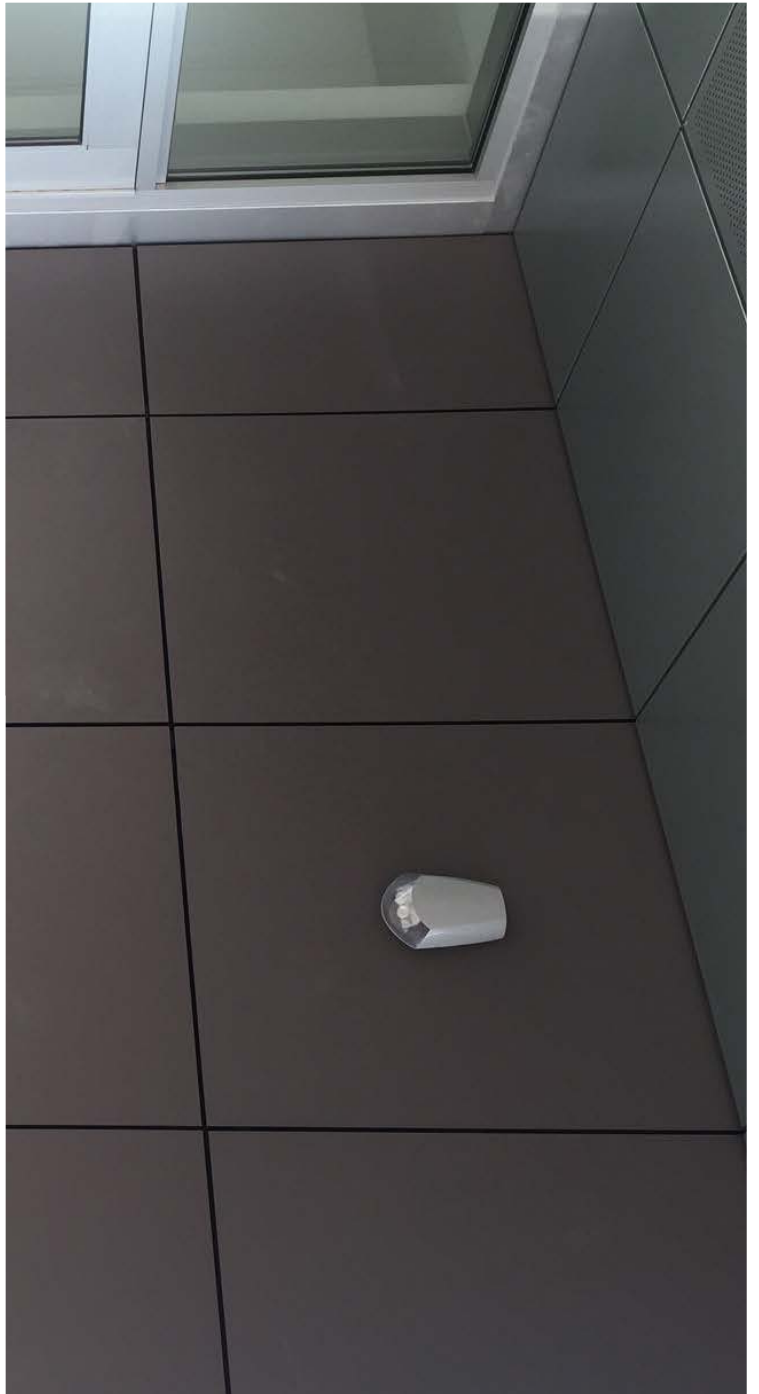
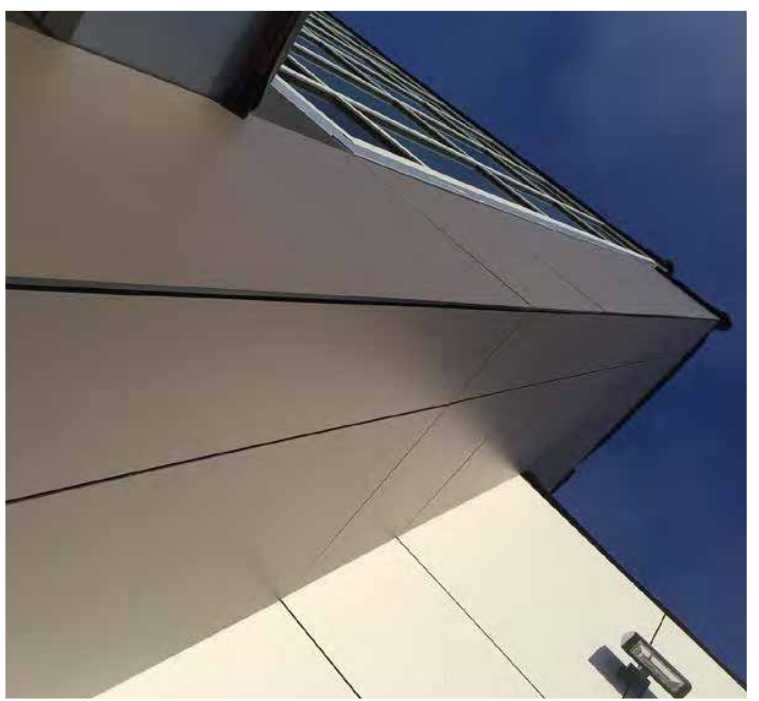


Base of Wall



Parapet Coping





CR

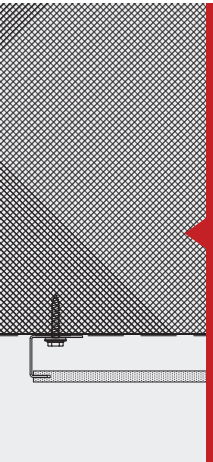
The CR Series Concealed Rail

Phenolic panel system with factory kerfed top and bottom edges using continuous horizontally oriented structural extruded aluminum rail and EF system extrusions at vertical terminations, with a minimum system depth of 1" plus 8mm phenolic panels.

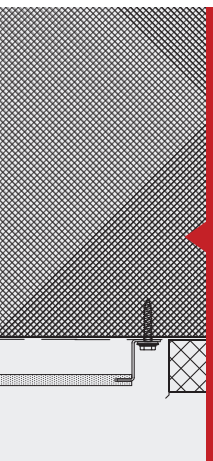
- Dry joint, rainscreen wall panels
- Available for phenolic material
- 1/8" joints horizontally and vertically
- Tested to meet AAMA 501 requirements with uncontrolled water infiltration resistance up to 15.04 psf
- Structural load tested per ASTM E 330 - 2 with a negative load of 50.13 psf
- System can be mounted on any waterproofed substrate with attachment to a suitable structure
- Standard system details for installation with building insulation with to the exterior of sheathing or within the stud cavity available in either AutoCAD or PDF formats
- Panels machined using a CNC Gantry Router



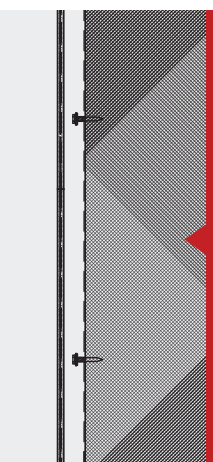
Phenolic Plank Panel at Bottom Termination



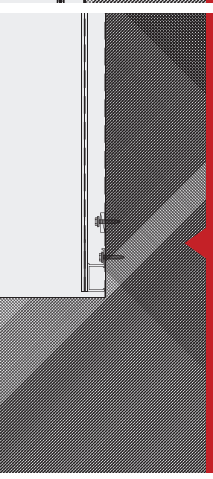
Phenolic Plank Panel at Top Termination

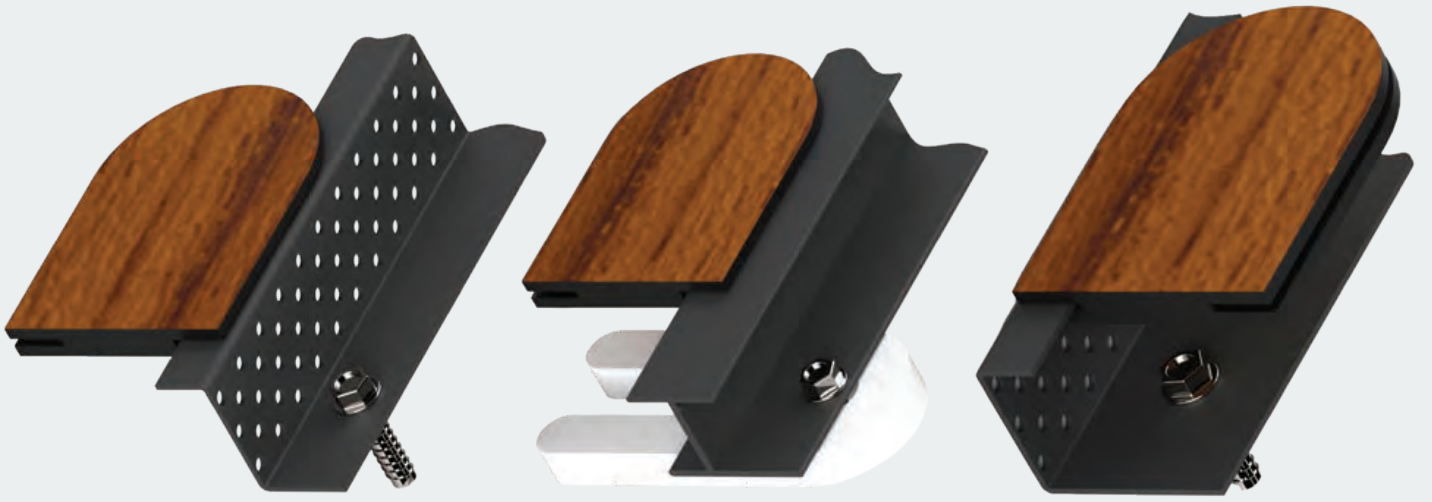


Phenolic Plank Panel at Vertical Joining



Phenolic Plank Panel at Corner Termination





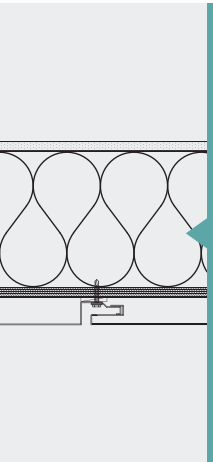
ZN

The ZN Series Zinc Series Panel System

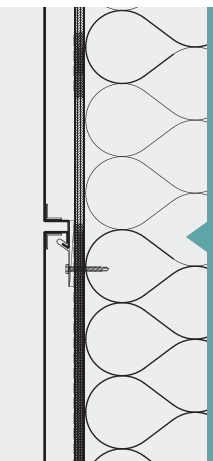
- Available in multiple configurations
- Standard and custom options
- Malleable zinc properties
- Complete systems available
- Material patinas to provide weather seal
- Available in fully tested systems
- CNC fabrication ensures consistency in manufacture of products
- Proven installation details
- Installation is quick and easy
- Complete flashing systems available
- Single-skin pressure-equalized rainscreen with interlocking panel design for ease of assembly with no butyl tape required on the panel
- Proven wall system, tested to AAMA 508-7, fabricated by NorthClad
- Custom sizes allow for endless options
- Available in stacking or dual interlocking panel configurations
- Interlocking design for easier installation



Horizontal Joint



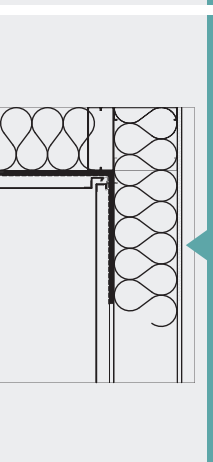
Vertical Joint



Outside Corner



Inside Corner



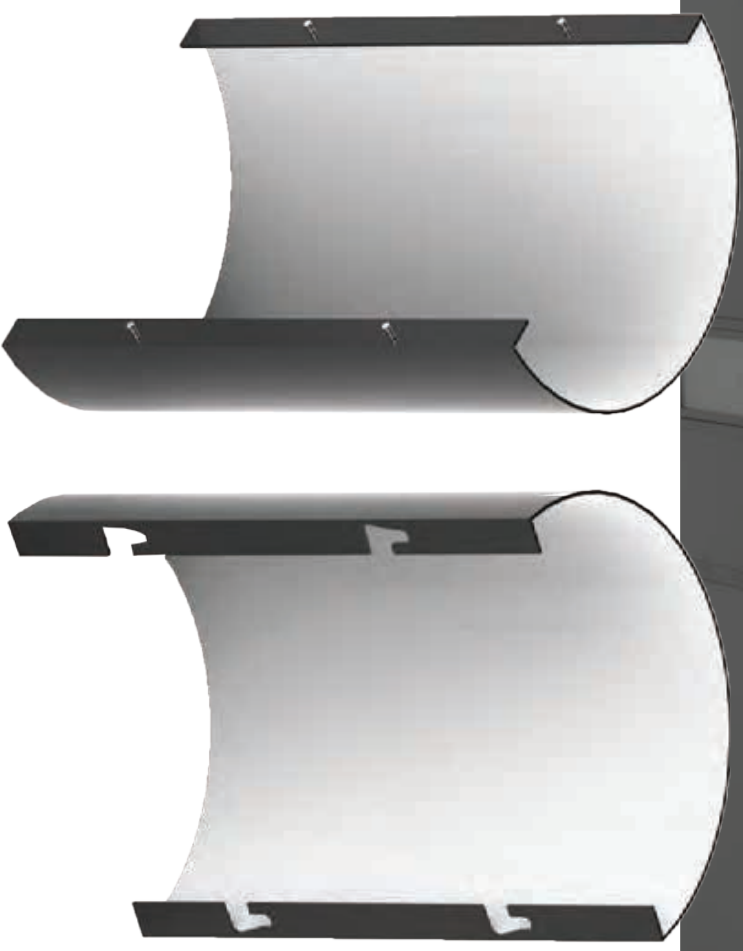


CL

The CL Series Column Cover Systems

Offering a huge range of shape, material, color, and finish options to choose from, all of our engineered systems are fabricated in the United States using state of the art fabrication technology.

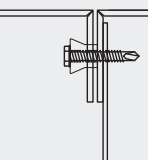
- Fabricated to precise dimensions and tolerances
- CNC fabrication produces smooth, continuous curves with no segmented appearance
- Material options include: aluminum, stainless steel, aluminum composite, and other custom metals
- Wide range of standard prefinished colors available as well as an endless array of custom color options
- Available in virtually any custom shape
- Diameter from 12" to 96" or more; vertical height up to 16'-0" per segment
- Multiple vertical joint configurations available
- Contains up to 35% recycled content
- Complete systems including butt plates for joints between vertical segments
- Cones and complex shapes are a specialty
- Installation is quick and easy
- PVDF (Kynar®/Hylar®) paint for long term color retention
- 20-year paint finish warranty available



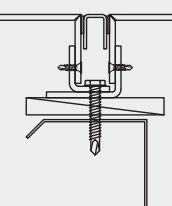
Options. Options. Options.

The NorthClad® CL Series column cover system provides three standard joint designs, multiple material options, a wide variety of color and finish options, and virtually any custom shape desired resulting in an extremely versatile product suited for many different applications. Best of all, our fabrication technology allows for up to 16'-0" tall round column covers! Please feel free to contact us to discuss your column cover needs.

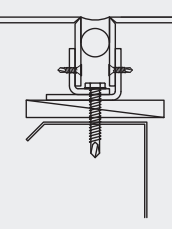
Standard Detail

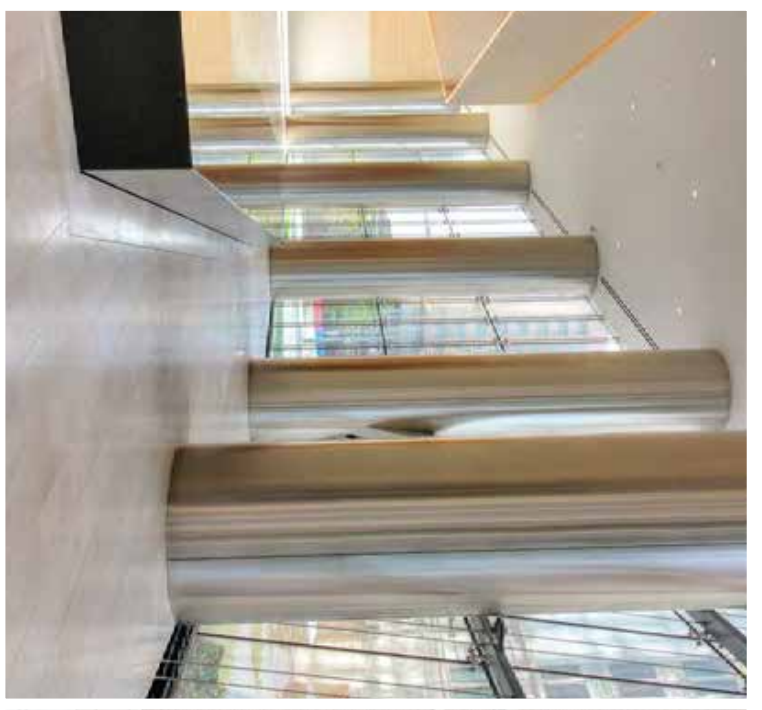


Alternate Detail



Alternate Detail

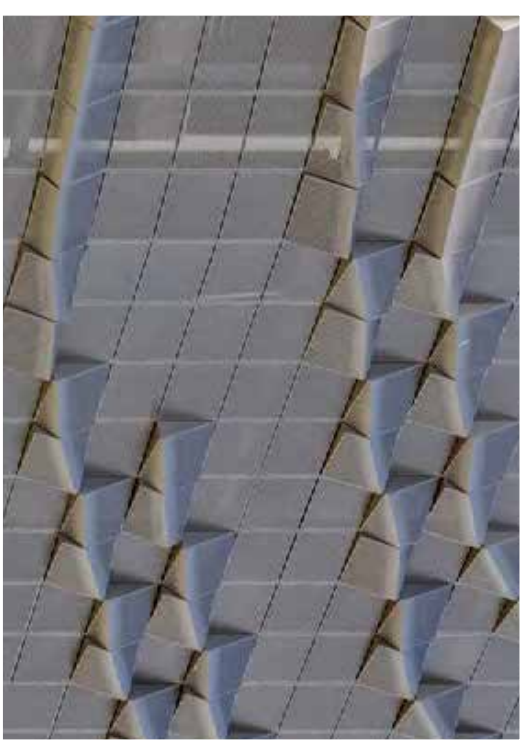


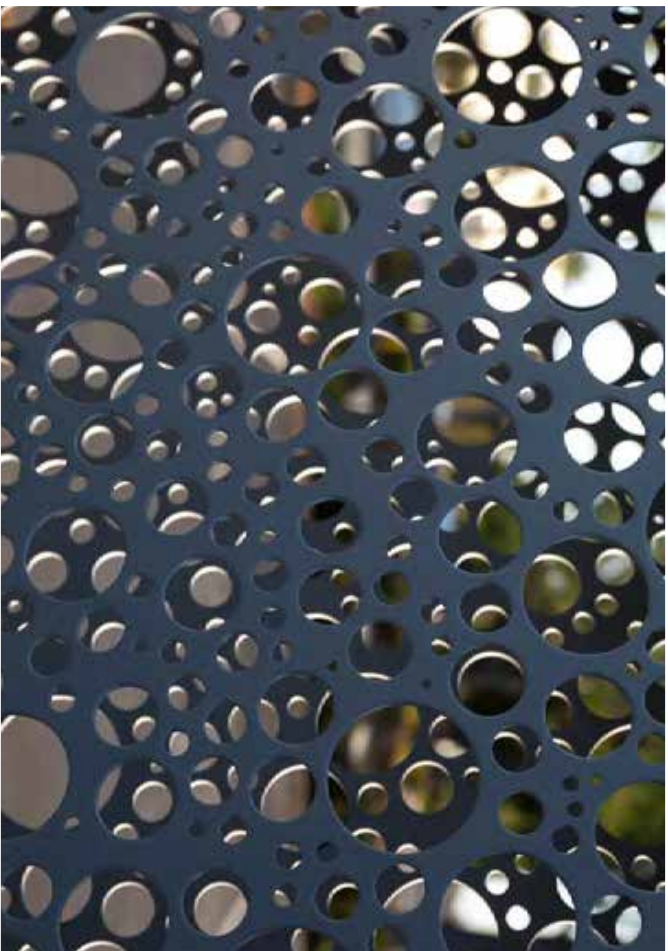


DS

Designer Series

An open-ended invitation for Architects and Designers to work directly with our experts to create unrestricted beauty in architecture.





Perforation Patterns

Perforation is not just for ventilation anymore. We are capable of perforating large scale (or small scale) patterns and artwork into virtually any of our panel systems.

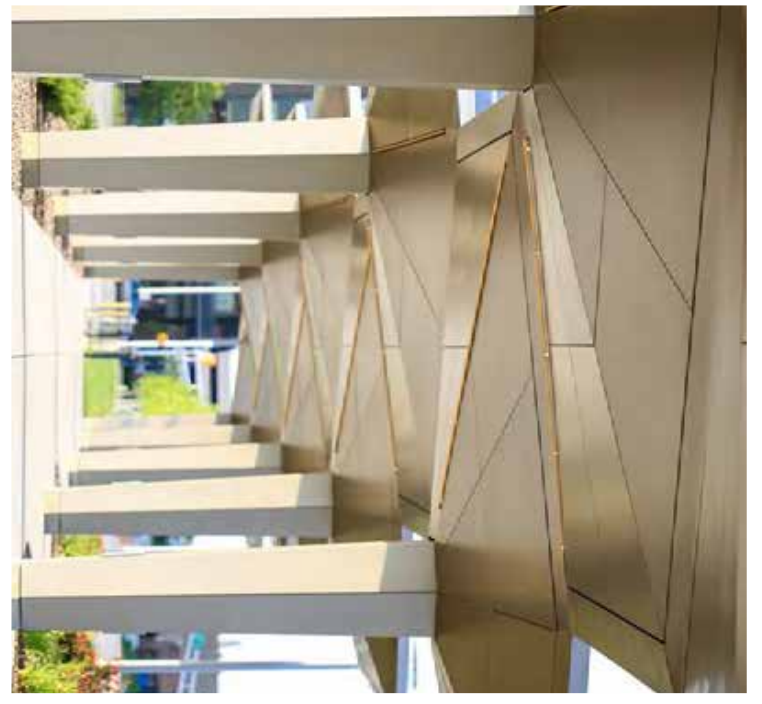
Our CNC equipment ensures accurate replication of designs and photographs using the perforation pattern itself. NorthClad is licensed to provide custom image based perforations. Perforation can be constrained to individual panels or cover the entire building.



Custom Materials and Finishes

Whether your project demands simple custom colors or more advanced finishing processes, we invite you to specify NorthClad systems. We are experienced with custom coatings, colors, and finishes across our entire line of products.

We are also capable of fabricating many of our systems from alternate materials such as weathered steel, engraved sheet, and other ornamental materials.





Curved Panels

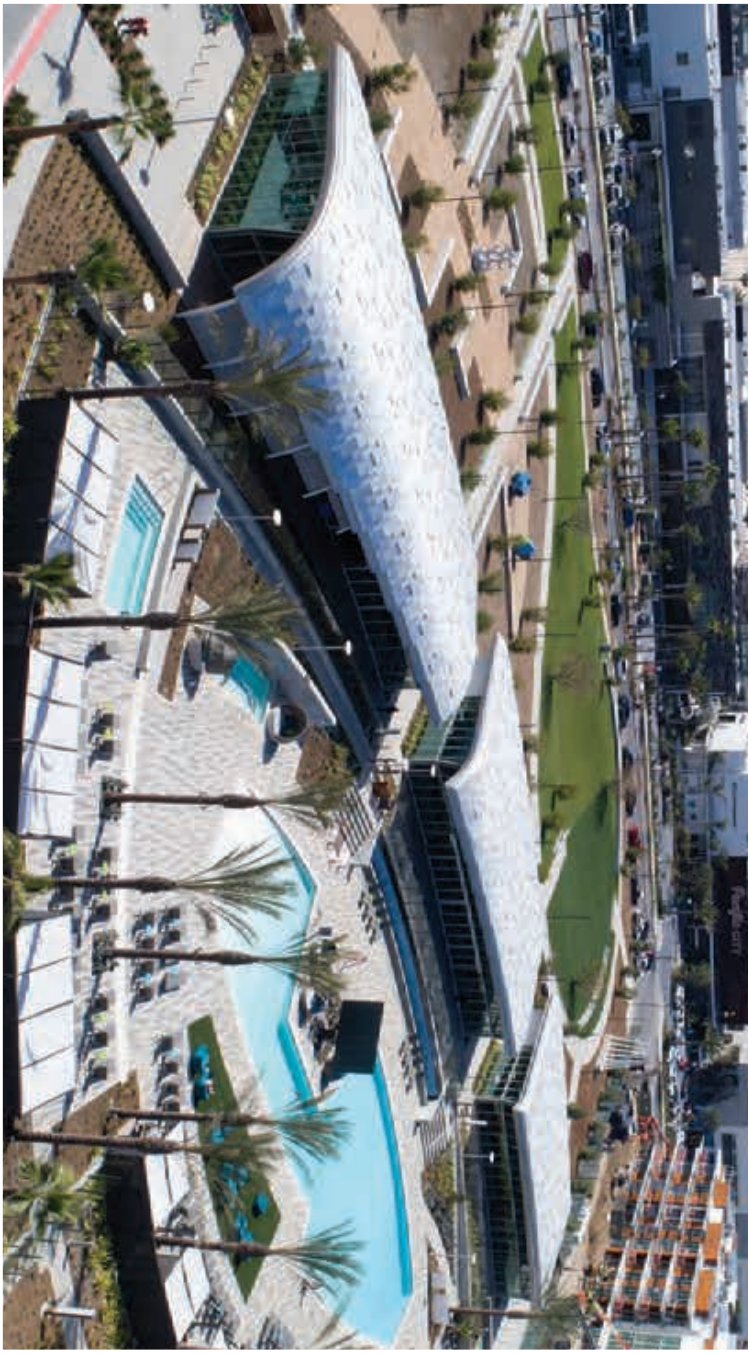
We can curve virtually any type of metal in many different gauges. We are capable of providing sheet material, metal panels and even aluminum composite material in smooth curves without segmentation.

Most of our systems can be made to incorporate a custom radius without affecting the integrity of the cladding system or related flashing systems.



Tapered Panels

Flat can be boring. Our AL Series panels are available tapered in three different systems: dual interlocking, vertical stacking, and extrusion mounted plate. Prefer ACM? No problem. We offer tapered ACM panels too. Panels can be tapered in a single direction, multiple directions, or mid-panel, depending on project design requirements.





Panel Depths

Ditch the two-dimensional standard with NorthClad AL or ACM Panels in different depths on the same elevation. All variants of the AL Series aluminum panels (dual interlocking, vertical stacking, and plate mounted extrusion) can coexist in different depths while still retaining their integrity, quick interlocking installation, and flashing details. Likewise, our ACM system can also be fabricated in multiple depths and installed in the same plane for a unique three-dimensional look that allows light and shadow to “bounce” around the elevation.



Panel Sizes

Utilize different size panels on the same façade for a unique look. Our ACM, AL, and EF series panel systems can all be ordered in various sizes and assembled together in much the same way that the standard system is installed. We ship each panel with identity markings for simple and accurate installation.

In most cases, flashing details don't need to deviate from our standard system details.

North



Clad®

rainscreen solutions

2822 119th St. SW, Suite 200, Everett, WA 98204

425.740.3702

info@northclad.com

www.northclad.com

AL

ACM

EF

ZN

CL

DS