



TERRA COTTA

Cladding &
Sunscreens

— IUPUI PARKING GARAGE —

Products: Piterak® Slim & Zonda® XL15
Colors: 12 Light Grey, 13 Storm Grey, Custom Blue & Custom Green
Finish: Smooth



CLASSIC MATERIAL

MEETS MODERN DESIGN

Terreal North America engineers and manufactures terracotta cladding and sunscreen solutions. Our terracotta products are manufactured by the oldest terracotta manufacturer in Europe, TERREAL, and the oldest continuously operational terracotta manufacturer in the United States, Ludowici. Our professional team of architectural consultants, engineers, and manufacturing operations ensure a total systems solution for your project. With millions of square feet of terracotta installed around the world, Terreal North America's team has the experience and expertise to assist on your next project.

Why terracotta facades.....	2
Rainscreen systems	4
Large module cladding	6
Special shapes	16
Sunscreens	18
Small module cladding.....	24

ADVANTAGES OF TERREAL'S TERRACOTTA SYSTEMS:

- Affordable cladding and sunscreen solutions
- Sustainable material
- Natural, time proven building material
- Non-fading, through-body colors
- Easy to install
- High impact resistance and durability
- Maintenance free
- Reduced solar heat gain through solar shading

CLADDING SYSTEMS CAN BE DESIGNED FOR A WIDE RANGE OF APPLICATIONS AND BUDGETS

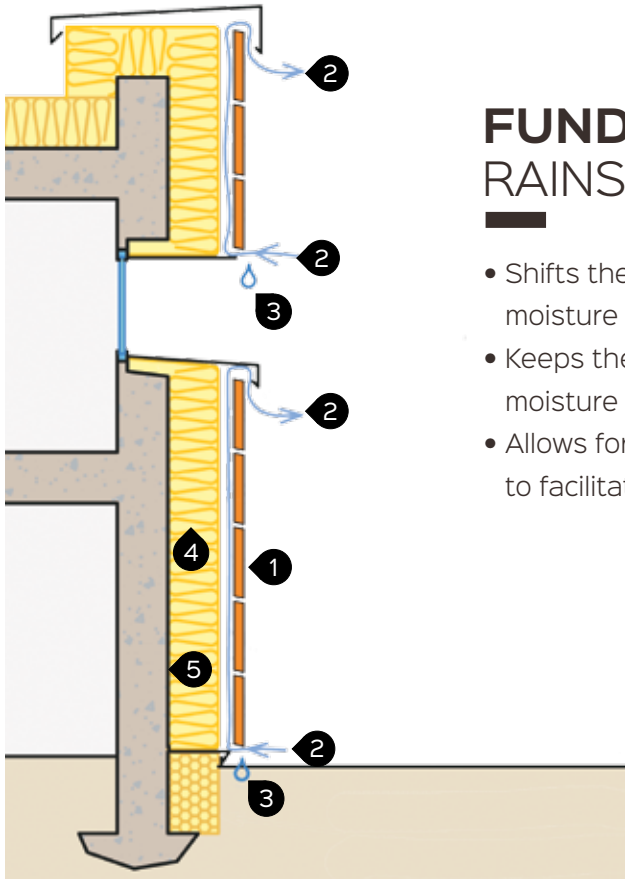


TERRACOTTA CLADDING

IDEAL FOR RENOVATION:

- The perfect natural and sustainable material to rejuvenate an existing building's exterior
- Increase energy efficiency with additional insulation
- Lightweight systems starting at 7 pounds per square foot
- Easy installation in all weather conditions
- Installed from the exterior, so building may remain occupied
- Natural, earth tone colors to harmonize with other structures and building materials
- Economical solution that is durable and beautiful for generations
- Wide range of colors, sizes and textures for countless aesthetic design opportunities





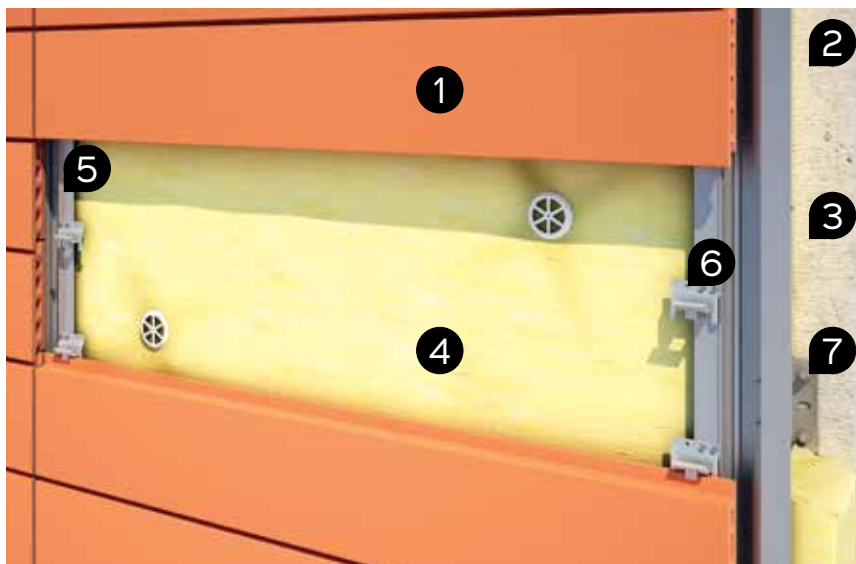
FUNDAMENTALS OF RAINSCREEN DESIGN:

- Shifts the primary rain/weather barrier away from the air, moisture and vapor barrier
- Keeps the majority of the moisture away from the air and moisture barrier via minimizing pressure differential
- Allows for air circulation between the cladding and insulation to facilitate drainage and promote drying

- 1 Terreal terracotta panel
- 2 Air flow
- 3 Moisture drainage
- 4 Insulation (rigid or mineral wool)
- 5 Air and moisture barrier

BENEFITS OF RAINSCREEN SYSTEMS:

- Improves a structure's life expectancy by protecting primary wall with second skin
- Energy savings and thermal benefits with reduced thermal transfer to the building interior and additional insulation
- Low maintenance costs
- Lightweight and can be installed year round, in all weather conditions
- Ventilated wall cavity and air space ensure a more weather tight building envelope



- 1 Piterak® Slim terracotta panel
- 2 Masonry/concrete
- 3 Air and moisture barrier
- 4 Insulation (rigid or mineral wool)
- 5 Vertical support profile
- 6 Stainless steel installation clip
- 7 Support bracket

Typical Terreal terracotta ventilated cladding system

— UNIVERSITY OF ARKANSAS – KIMPEL HALL —

Product: Piterak® Slim
Color: 15 Slate Grey
Finish: Smooth

KIMPEL
HALL

— PROMEDICA HEADQUARTERS —

Products: Piterak® XS & Zonda® XL10
Colors: 13 Storm Grey & 15 Slate Grey
Finish: Smooth




PROMEDICA



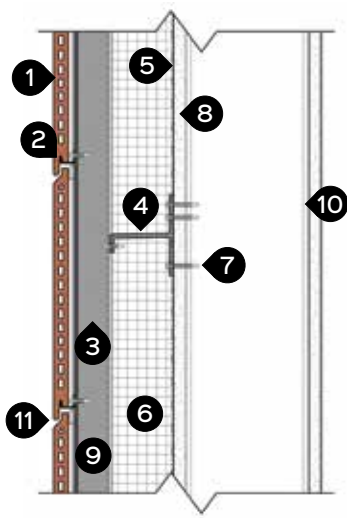
PITERAK® XS

Piterak® XS is an economical 18mm thick, double-skin terracotta rainscreen cladding system with overlapping horizontal reveals. The product is a thin, lightweight and strong medium module terracotta panel available in a variety of standard sizes and a multitude of made-to-order sizes with a maximum height of 1'-4" and maximum length of 5'-0". Panels are furnished in lengths required for your project or they may be cut by the installation contractor for specific field conditions. Piterak® XS maintains excellent structural performance that is comparable to thicker terracotta panels while providing a slender, double-skin profile. Through exceptional engineering and manufacturing, our thinnest double-skin terracotta panel maintains a high wind and impact resistance rating. The terracotta cladding panels are supported by our engineered rainscreen framing system and stainless steel installation clips. Piterak® XS provides structural versatility and superior aesthetics in an economically superior terracotta rainscreen solution.

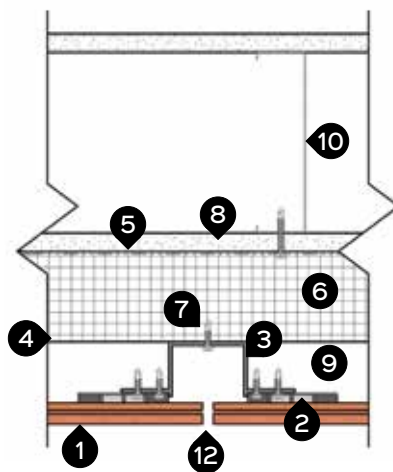
PANEL SIZE PHYSICAL CHARACTERISTICS - IMPERIAL MODULES*

	CENTER TO CENTER MODULE (FT) CENTER TO CENTER MODULE (MM)	PANEL SIZE (IN) SIZE (MM)	UNIT WEIGHT (LBS) UNIT WEIGHT (KG)	WEIGHT (LBS) PER SQ FT WEIGHT (KG) PER M2
	8" x 60" 203 x 1219	8.39" x 59.5" x .71" 213 x 1206 x 18	21.5	6.5 30.2
12" x 60" 305 x 1219	12.39" x 59.5" x .71" 315 x 1206 x 18	32.2	6.5 30.2	
16" x 60" 406 x 1219	16.39" x 59.5" x .71" 416 x 1206 x 18	43.0	6.5 30.2	

*Exact U.S. Imperial modules for ease of construction layout and installation. Metric dimension terracotta panels are available.



VERTICAL SECTION



HORIZONTAL SECTION

- 1 Piterak® XS Panel
- 2 Piterak® XS installation clip
- 3 Vertical support rail
- 4 Support component
- 5 Air and moisture barrier
- 6 Insulation (rigid or mineral wool)
- 7 Stainless steel fasteners
- 8 Exterior grade sheathing
- 9 Air cavity
- 10 Wall framing member
- 11 Horizontal overlap reveal
- 12 Open vertical reveal



Piterak® XS
installation clip



VERTICAL
SUPPORT RAIL

— GIRLS, INC. —

Product: Piterak® XS,
Colors: Gloss White, Light Grey, Medium Grey, Red, & Blue Glazes
Finish: Smooth



— DUKE UNIVERSITY STUDENT WELLNESS CENTER —

Products: Piterak® XS and Autan XL
Colors: 12 Light Grey & 13 Storm Grey
Finish: Smooth



— PROMEDICA HEADQUARTERS —

Product: Piterak® XS
Colors: 13 Storm Grey & 15 Slate Grey
Finish: Smooth



— RIVERVIEW HEALTH WESTFIELD HOSPITAL —

Products: Piterak® XS, Piterak® Slim, & Custom Profile
Colors: 01 Red & 12 Light Grey
Finishes: Smooth & Ridged



— BULLIS DISCOVERY SCHOOL —

Product: Piterak® XS
Color: 01 Red
Finish: Smooth



— EVANSVILLE MUSEUM OF ARTS, HISTORY & SCIENCE —

Product: Piterak® XS
Color: Matte White Glaze
Finish: Smooth




— THE RICHARDS GROUP —

Product: Piterak® Slim
Color: 13 Storm Grey
Finish: Smooth

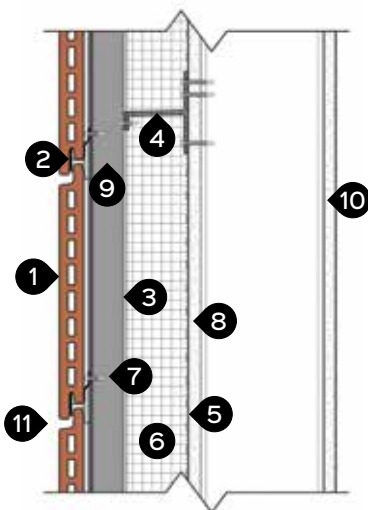
PITERAK® SLIM

Piterak® Slim is a 30mm thick, double-skin terracotta rainscreen cladding system with overlapping horizontal reveals. The system contains a large module terracotta panel available in a variety of standard sizes and a multitude of made-to-order sizes with a maximum height of 2'-0" and maximum length of 6'-0". Panels are furnished in lengths required for your project or they may be cut by the installation contractor for specific field conditions. Piterak® Slim provides excellent structural load performance that is equivalent to thicker terracotta panels while providing a slender profile and minimal material weight. The system provides high wind resistance and the highest impact resistance rating under international standards. The terracotta cladding panels are supported by our engineered rainscreen framing system and stainless steel installation clips. Piterak® Slim is a terracotta cladding system that provides structural versatility and superior aesthetics in an economical rainscreen solution.

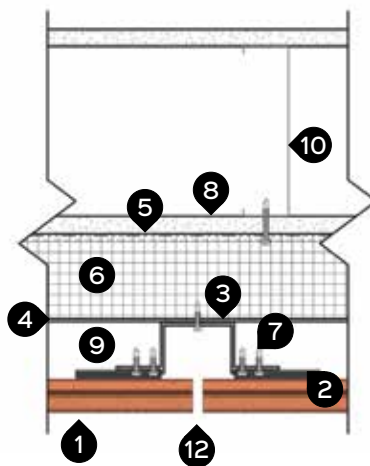
PANEL SIZE PHYSICAL CHARACTERISTICS - IMPERIAL MODULES*

	CENTER TO CENTER MODULE (IN) CENTER TO CENTER MODULE (MM)	PANEL SIZE (IN) SIZE (MM)	UNIT WEIGHT (LBS) UNIT WEIGHT (KG)	WEIGHT (LBS) PER SQ FT WEIGHT (KG) PER M2
	8" x 60" 203 x 1524	8.55" x 59.5" x 1.18" 217 x 1511 x 30	33.1 15.01	9.94 48.5
12" x 60" 305 x 1524	12.55" x 59.5" x 1.18" 319 x 1511 x 30	49.7 22.54	9.94 48.5	
18" x 60" 457 x 1524	18.55" x 59.5" x 1.18" 471 x 1511 x 30	74.55 33.81	9.94 48.5	
24" x 60" 609 x 1524	24.55" x 59.5" x 1.18" 624 x 1511 x 30	99.4 45.09	9.94 48.5	

*Exact U.S. Imperial modules for ease of construction layout and installation. Metric dimension terracotta panels are available.

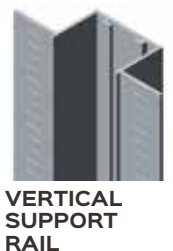


VERTICAL SECTION



HORIZONTAL SECTION

- 1 Piterak® Slim Panel
- 2 Piterak® Slim installation clip
- 3 Vertical support rail
- 4 Support component
- 5 Air and moisture barrier
- 6 Insulation (rigid or mineral wool)
- 7 Stainless steel fasteners
- 8 Exterior grade sheathing
- 9 Air cavity
- 10 Wall framing member
- 11 Horizontal overlap reveal
- 12 Open vertical reveal



— UNIVERSITY OF ARKANSAS
— KIMPEL HALL —

Product: Piterak® Slim
Color: 15 Slate Grey
Finish: Smooth



— MONCRIEF CANCER INSTITUTE —

Product: Piterak® Slim,
Color: 03 Champagne with Soft Matte White Glaze
Finishes: Smooth & Ridged



— CUMMINS LIVEWELL CENTER —

Products: Piterak® Slim & Piterak® XS
Colors: Matte White Glaze & 13 Storm Grey
Finishes: Smooth & Grooved





— KENT STATE UNIVERSITY, STARK – FINE ARTS BUILDING —

Product: Piterak® Slim
Colors: 07 Sienna & 11 Sahara Beige
Finishes: Smooth & Custom Shapes



— BUCKS COUNTY JUDICIAL CENTER —

Product: Piterak® Slim
Colors: 01 Red, 02 Red Orange & 07 Sienna
Finish: Smooth

— WICHITA DWIGHT D. EISENHOWER NATIONAL AIRPORT —

Products: Piterak® SL4 & Autan® XL

Color: 03 Champagne

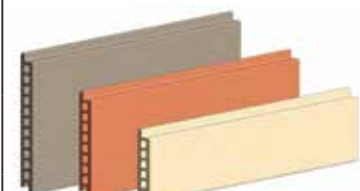
Finishes: Grooved & Smooth



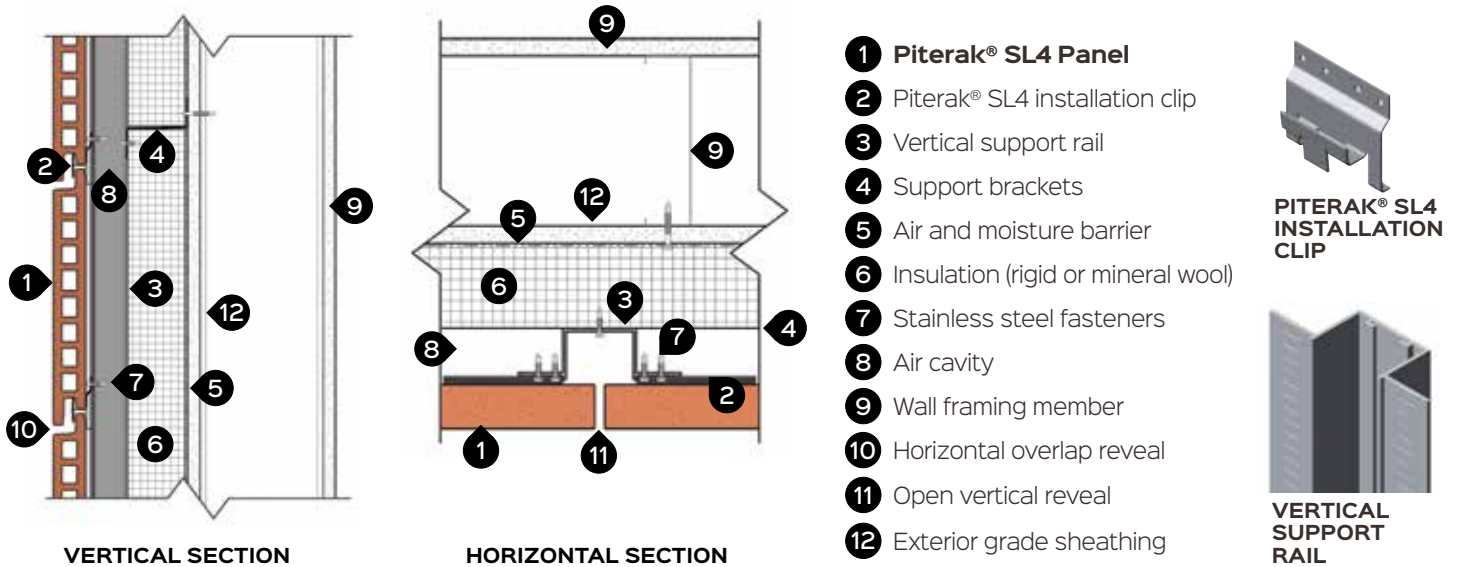
PITERAK® SL4

Piterak® SL4 is a 40mm thick, double-skin terracotta rainscreen cladding system with overlapping horizontal reveals. The system contains a large module terracotta panel available in a variety of standard sizes and a multitude of made-to-order sizes with a maximum height of 2'-0" and a maximum length of 6'-0". Panels are furnished in lengths required for your project or they may be cut by the installation contractor for specific field conditions. Through exceptional engineering and manufacturing, our system provides a high wind resistance and the highest impact resistance rating under international standards. The terracotta cladding panels are supported by our engineered rainscreen framing system and stainless steel installation clips.

PANEL SIZE PHYSICAL CHARACTERISTICS - IMPERIAL MODULES*

	CENTER TO CENTER MODULE (IN) CENTER TO CENTER MODULE (MM)	PANEL SIZE (IN) SIZE (MM)	UNIT WEIGHT (LBS) UNIT WEIGHT (KG)	WEIGHT (LBS) PER SQ FT WEIGHT (KG) PER M2
	8" x 60" 203 x 1524	8.55" x 59.5" x 1.57" 217 x 1511 x 40	39.4 17.9	11.8 57
12" x 60" 305 x 1524	12.55" x 59.5" x 1.57" 319 x 1511 x 40	59 26.8	11.8 57	
18" x 60" 457 x 1524	18.55" x 59.5" x 1.57" 471 x 1511 x 40	88.5 40.2	11.8 57	
24" x 60" 609 x 1524	24.55" x 59.5" x 1.57" 624 x 1511 x 40	118 53.6	11.8 57	

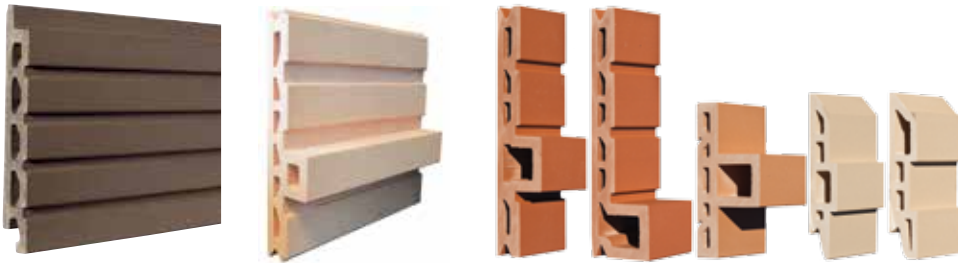
*Exact U.S. Imperial modules for ease of construction layout and installation. Metric dimension terracotta panels are available.



SHAPES

SPECIAL SHAPES

Special shaped panels can add texture and drama to a building's facade. Additive and subtractive elements, grooves, bars, chevrons, rounded ribs, or gentle rolling curves are a sampling of the possibilities. Special shapes, glaze colors and custom color offerings can be developed with aesthetic and budget considerations in mind. Contact Terreal North America for assistance in designing a shape to fit your architectural vision.



— KENT STATE UNIVERSITY, STARK – FINE ARTS BUILDING —

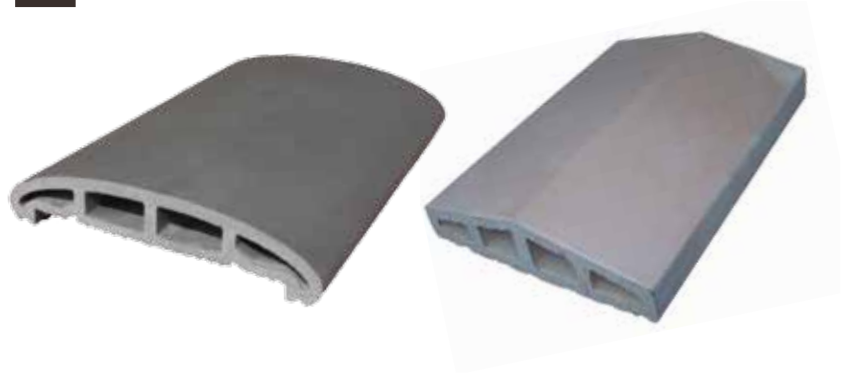
Product: Piterak® Slim
Colors: 07 Sienna & 11 Sahara Beige
Finishes: Smooth & Custom Shapes



WINDOW SILL



COPINGS



CORNERS



**FACTORY EXTRUDED
CORNER UNITS**



**90° BULLNOSE
CORNER**



**CUSTOM ANGLE
BULLNOSE CORNER**



**FACTORY OR FIELD
MITERED CORNER**



**METAL ACCENT
TRIM CORNER**



**NEXCLAD SYSTEM SURFACE
CORNER**



**NEXCLAD SYSTEM INTEGRAL
CORNER**



**NEXCLAD SYSTEM INTEGRAL
CORNER**

— CSUMB ACADEMIC BUILDING —

Products: Autan® & Zonda® XL10
Color: Sahara Beige
Finish: Smooth



HARMATTAN®
ROSE



AUTAN®
RED



AUTAN®
RED-ORANGE



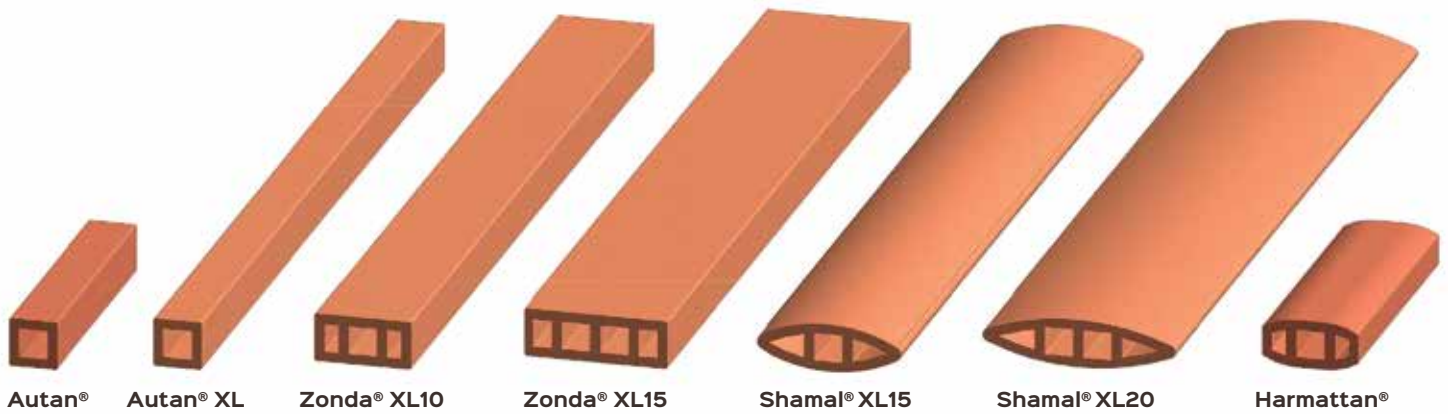
ZONDA®
RED



ZONDA®
RED

SUNSCREENS

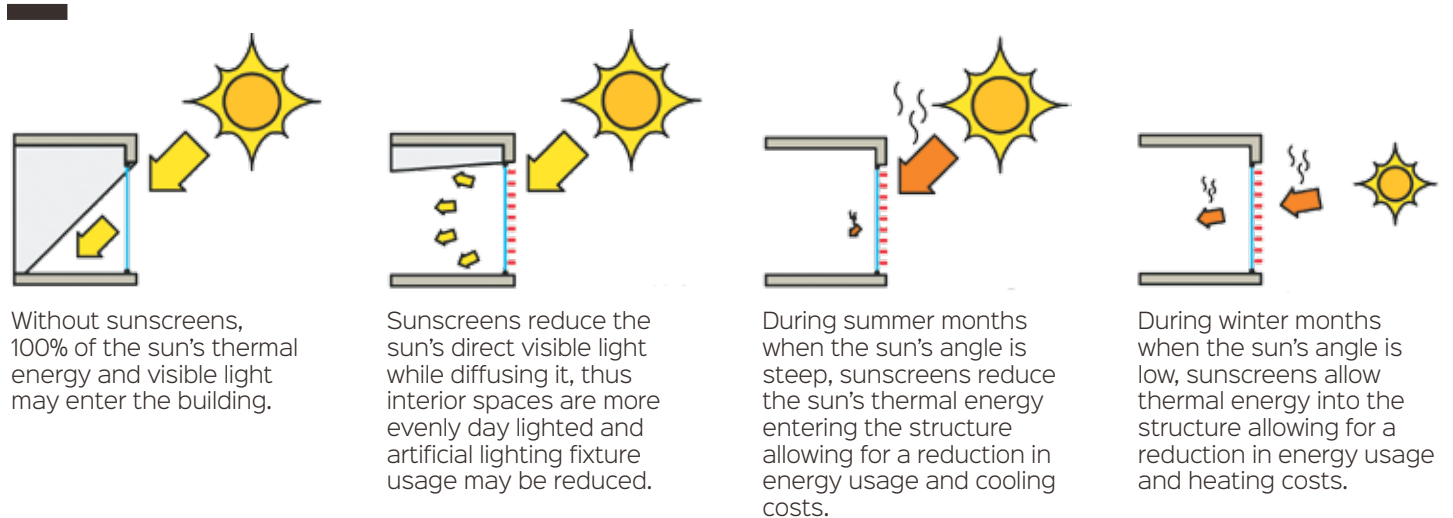
Terreal North America offers a wide range of terracotta sunscreen baguettes that vary in profile and length. The standard terracotta profiles range from a modest square or rectangle, to an ovoid and unique airfoil design. Custom terracotta profiles can be developed to address solar control or building aesthetic requirements. Please contact Terreal North America to explore the possibilities.



STANDARD SIZE PHYSICAL CHARACTERISTICS

PROFILE	SIZE (IN) H X W X L	UNIT WEIGHT	COLOR COLLECTION
Autan®	2.09" x 2.0" x 11"	2.64 lbs/LF	RQ
Autan® XL	1.9685" x 1.9685" x up to 6'	2.15 lbs/LF	Sola
Zonda® XL 10	1.9685" x 3.9375" x up to 6'	6.1 lbs/LF	Sola
Zonda® XL 15	1.9685" x 5.9055" x up to 6'	6.6 lbs/LF	Sola
Shamal® XL15	1.97" x 5.96" x Up To 5'	4.84 lbs/LF	Sola
Shamal® XL20	1.97" x 7.93" x Up To 5'	7.06 lbs/LF	Sola
Harmattan®	1.625" x 3.375" x 11.8125"	3.124 lbs/LF	RQ

HOW SOLAR SHADES REDUCE ENERGY CONSUMPTION

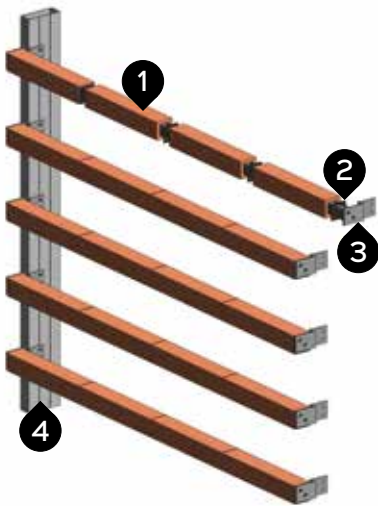


SUNSCREENS

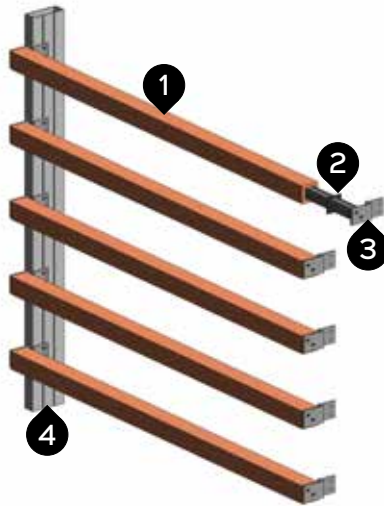
ASSEMBLIES

Terracotta sunscreen support and attachment systems are designed to meet project specific requirements that include horizontal or vertical orientation, spacing, and rotation of the sunscreens to achieve solar heat gain reduction, day lighting, and resistance to wind loads. Please contact Terreal North America for sunscreen support and attachment design assistance.

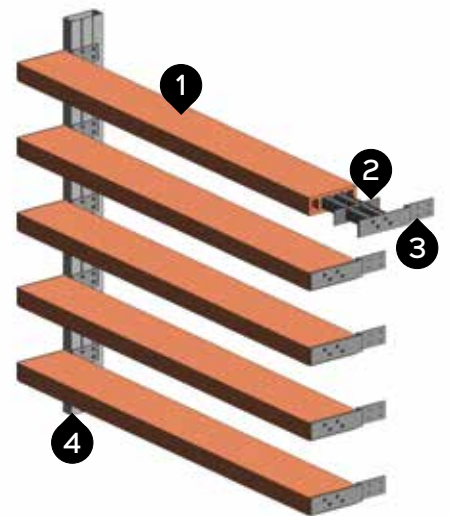
AUTAN®



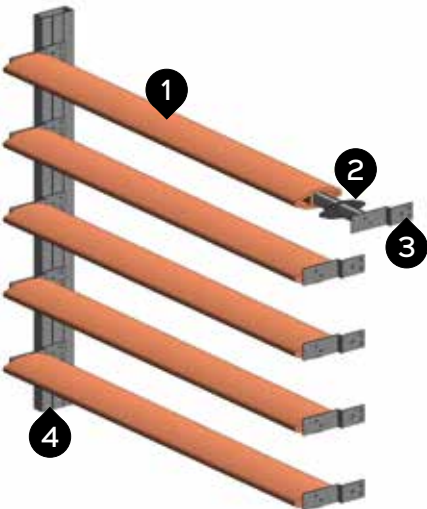
AUTAN® XL



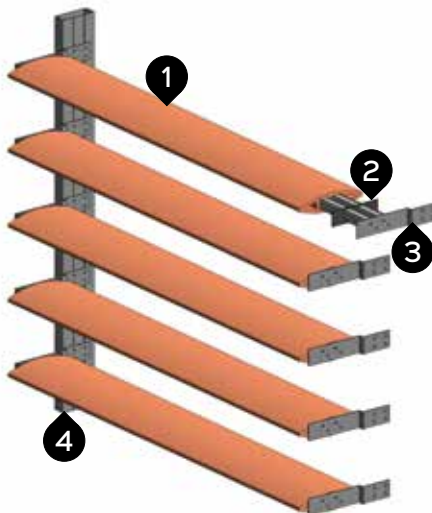
ZONDA® XL



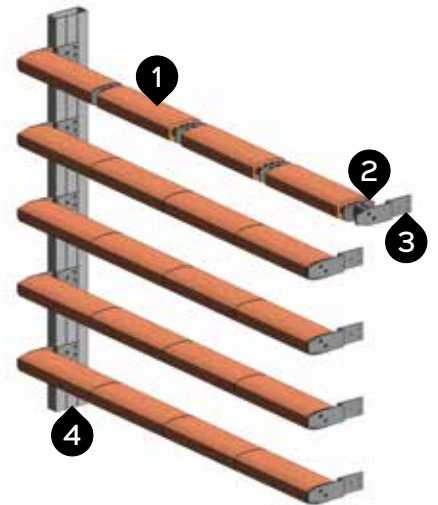
SHAMAL® XL15



SHAMAL® XL20



HARMATTAN®



- 1 Terracotta sunscreen baguette
- 2 EPDM gasket
- 3 Internal aluminum support component and end plate
- 4 Sunscreen support member

SUPPORT DETAILING

Sunscreen support framing may be custom designed, detailed, engineered, and fabricated in a variety of metals and finishes to fulfill your project's aesthetics. The following are installed attachment method examples:



COLORS AND FINISHES

SOLA COLOR COLLECTION

Piterak® XS – Piterak® Slim – Piterak® SL4 – Autan® XL – Zonda® XL10 – Zonda® XL15 – Shamal® XL15 – Shamal® XL20

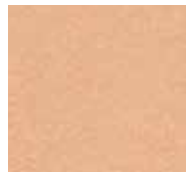
STANDARD THROUGH-BODY COLORS



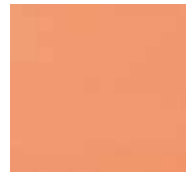
01 Red



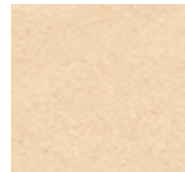
04 Salmon



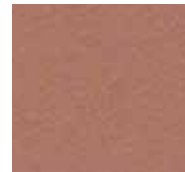
06 Sand



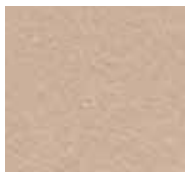
02 Red Orange



03 Champagne



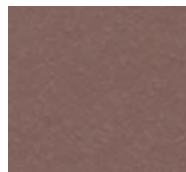
07 Sienna



11 Sahara Beige



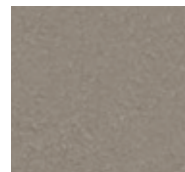
12 Light Grey



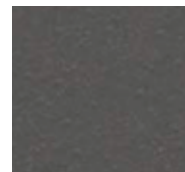
09 Coffee Brown



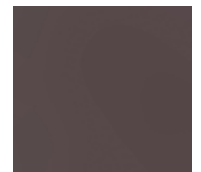
10 Chalk White



13 Storm Grey



15 Slate Grey

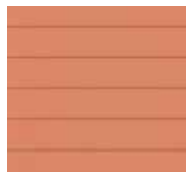


16 Ebony

AVAILABLE PANEL FINISHES



Smooth



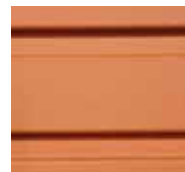
Ridged



Fine Ridged



Brushed



Grooved



Patinated

RQ COLOR COLLECTION

Autan® - Harmattan®

STANDARD THROUGH-BODY COLORS



Violine



Red



Red Orange



Pink



Champagne



Beige



Pearl Grey



Brown



Ebony

GLAZE COLOR COLLECTION

Piterak® XS – Piterak® Slim – Piterak® SL4 – Autan® – Autan® XL – Harmattan® – Zonda® XL10 – Zonda® XL15 – Shamal® XL15 – Shamal® XL20



Orange



Red



Mars Red



Yellow



Lichen



Shadow Earth



Petrol Blue



Verdigris



Green



Cobalt Blue



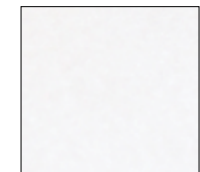
Voilet



Calamine Pink



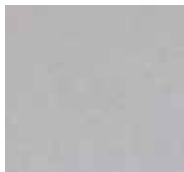
Glossy White



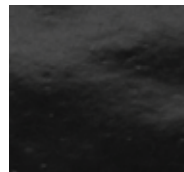
Matte White



Glossy Light Grey



Matte Light Grey



Glossy Black



Matte Black



Marine Black



Steel

CUSTOM COLORS



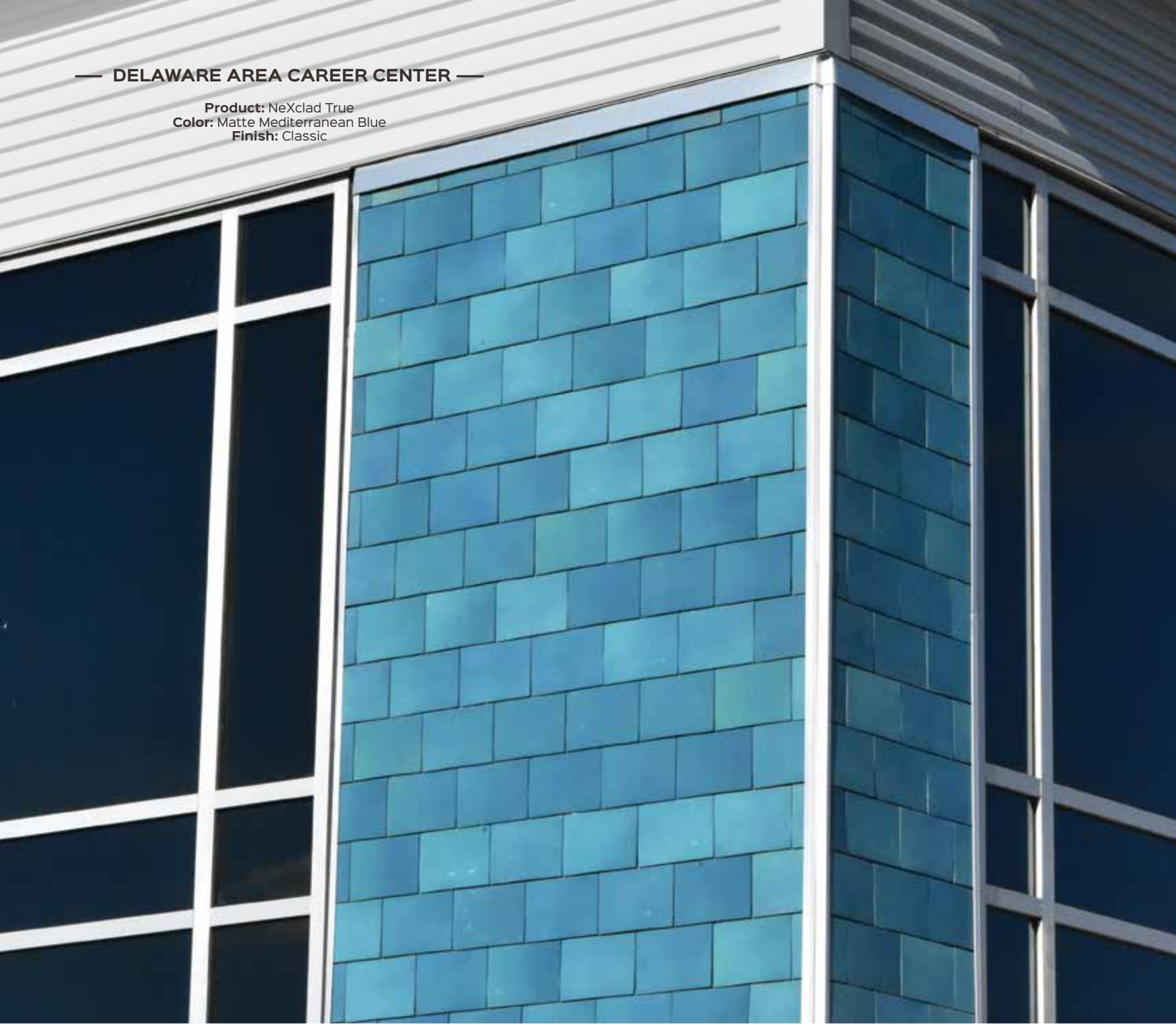
Terreal North America can also produce a wide range of custom colors with a matte, semi-gloss, gloss or metallic finish.

* Special shapes, glaze colors and custom color offering varies by order and is based on order size and current plant production volumes.



— DELAWARE AREA CAREER CENTER —

Product: NeXclad True
Color: Matte Mediterranean Blue
Finish: Classic




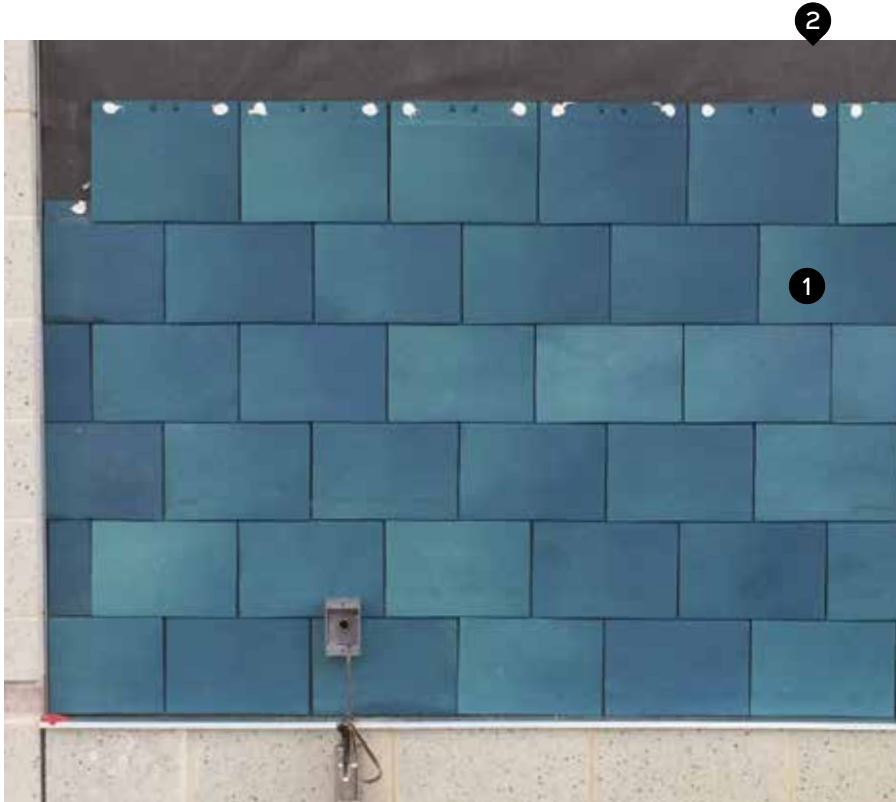
NEXCLAD TRUE

NeXclad True is the newest terracotta cladding solution from Terreal North America. Designed to install with a flush surface texture, this patented, small module terracotta cladding offers design professionals the durability and customization capabilities of a NeXclad clay tile with the sleek streamlined look of a flush panel.

NeXclad's ease of installation provides an extremely economical, classic cladding solution, while providing limitless color options to realize a building's design aesthetic. NeXclad True is currently available in an 8"x12" size with endless color options and a 75-year material warranty.

STANDARD PHYSICAL CHARACTERISTICS

	CENTER TO CENTER MODULE (IN)	PANEL SIZE (IN)	WEIGHT (LBS) PER SQ FT
	8" x 12"	7.75" x 11.875"	8.15 LBS/SQ FT



- 1 NeXclad True
- 2 Drainage plane, air and moisture barrier

Not shown: Nailable exterior grade sheathing

— LIBERTY UNITED METHODIST CHURCH —


Product: NeXclad 16
Colors: Matte White & Custom Matte White with Grey Mist
Finish: Classic



NEXCLAD

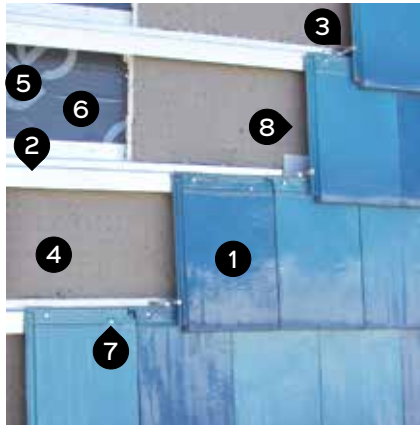
NeXclad is a single-skin, small module terracotta cladding system that is available in two standard sizes, a variety of surface textures, and boundless color options. NeXclad may be installed directly to wall sheathing or as the finish material in a rainscreen application. A variety of corner options are available that can be manufactured in the exact coloration of the field tiles for a harmonious finished appearance. The small module terracotta tiles' ease of installation provides an extremely economical cladding solution, while maintaining sensitivity to a building's design aesthetic.

STANDARD SIZE PHYSICAL CHARACTERISTICS

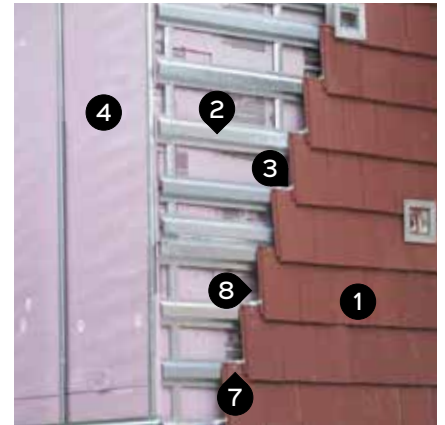
	PROFILE	CENTER TO CENTER MODULE (IN)	TILE SIZE (IN)	QUANTITY PER SQ FT	UNIT WEIGHT (LBS)	WEIGHT (LBS) PER SQ FT
	NeXclad 14	8.25" x 11"	9" x 14" x .875"	1.59	5.06	8.05
	NeXclad 16	10.125" x 13"	10.75" x 16" x .875"	1.09	6.88	7.53



Direct to sheathing NeXclad System

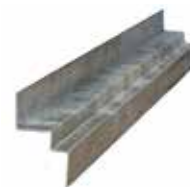


Rainscreen NeXclad System



Rainscreen NeXclad System

- 1** NeXclad
- 2** NeXclad system rail
- 3** Restraining clip
- 4** Insulation (rigid or mineral wool)
- 5** Air and moisture barrier
- 6** Exterior grade sheathing
- 7** Stainless steel fasteners
- 8** Air cavity
- 9** Nailable exterior grade sheathing



RAINSCREEN NEXCLAD SYSTEM RAIL



— PRINCETON UNIVERSITY -
LAKESIDE GRADUATE STUDENT HOUSING —

Product: NeXclad 16
Colors: Custom Colors
Finish: LudoSlate



— NATIONAL INSTITUTE OF HEALTH,
SAFRA FAMILY LODGE —

Product: NeXClad
Color: Ebony Mist
Finish: Classic



— UNIVERSITY OF WISCONSIN - HUMAN ECOLOGY BUILDING —

Product: NeXclad
Color: Clay Red
Finish: Classic



— UNIVERSITY OF TEXAS - STUDENT HOUSING —

Product: NeXClad
Color: Clay Red
Finish: Classic



— BUFFALO STATE COLLEGE - ALUMNI &
VISITOR CENTER —

Product: NeXClad 14
Color: Plumstone
Finish: Americana

— PRIVATE RESIDENCE —

Product: NeXclad 16
Color: Vermont Gray Black
Finish: Classic



— ST. COLETTA SCHOOL OF GREATER WASHINGTON —

Product: NeXclad
Colors: Custom Colors
Finish: Classic



— NEW ENGLAND CONSERVATORY OF MUSIC —
STUDENT LIFE AND CONSERVATORY —

Product: NeXclad 16
Colors: Custom Color Blend
Finish: Classic





Photos: Peter Vanderwerker Photography

COLORS AND FINISHES

NEW LEXINGTON COLOR COLLECTION

NeXclad - NeXclad True

STANDARD THROUGH-BODY COLOR

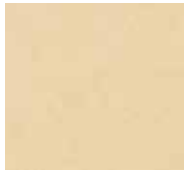


Clay Red

STANDARD MATTE GLAZE COLORS



Matte White



Barcelona Buff



Desert Sand



Santiago Rose



Slate Red



Process Flash



Summer Rose



Burgundy



Bright Green



Vintage Green



Empire Green



Forest Green



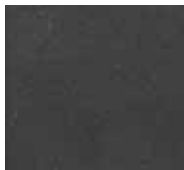
Norman Black



Briar Brown



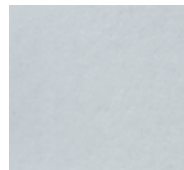
Aged Oak



Brunswick Black



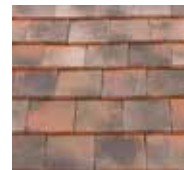
Ebony



Ash Gray



Antiqued Pewter



Fireflash



Vechio



Anziani



Terra Cotta



Dark Terra Cotta



Villagio



Tuscany



Dark Tuscany



Provence



Sienna



Western Cedar



Earth Gray



Aged Cedar



Ebony Mist



Vermont Gray Black



Slate Gray



Montpelier Green



Mottled Green
Purple



Plumstone



Antiqued
Montpelier Green



Antiqued Slate
Gray



Antiqued
Brunswick Black



Strata Gray

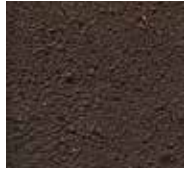
STANDARD WEATHERED GLAZE COLORS



Sunset Red



Beach Brown



Lava Black

STANDARD GLOSS GLAZE COLORS



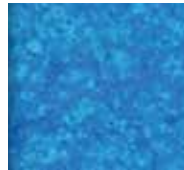
Midnight Black



Brookville Green



Royal Persian Blue



Mediterranean Blue

AVAILABLE SURFACE FINISHES



Americana



Classic



Lanai



Williamsburg



BCC Slate



BCC Shake



LudoShake



LudoSlate



CUSTOM COLORS

NeXclad and NeXclad True can be manufactured with custom colors and textures to fit your design vision. Contact us for more information.



TERREAL NORTH AMERICA, LLC

P.O. Box 309, New Lexington, OH 43764

T. 888-582-9052 | F. 740-342-1906

www.terrealna.com

Get social with Terreal North America

www.terrealna.com/social



Additional Resources: ludowici.com | terrealfacade.com

Terreal North America reserves the right to alter, modify or redesign its products at any time, without liability and without notice.

©2019 Terreal North America



TNA-002-0219