




# PITERAK® SLIM FACADES

Piterak® Slim is a 30mm thick, double-skin terracotta rainscreen cladding system with overlapping horizontal reveals that provides structural versatility and superior aesthetics in an economical rainscreen solution. This large module cladding system has multiple standard panel sizes and is available in a variety of made-to-order options—with a maximum height of 2'-0" and maximum length of 6'-0". Panels are furnished in lengths required for your project or may be cut by the installation contractor for specific field conditions. Piterak® Slim provides excellent structural load performance equivalent to thicker terracotta panels, while offering a more slender profile and minimal material weight. The Piterak® Slim system offers high wind resistance and the highest impact resistance rating under international standards. These panels are supported by our engineered rainscreen framing system and stainless steel installation clips.

## STANDARD PHYSICAL CHARACTERISTICS

	CENTER TO CENTER MODULE (FT) <i>CENTER TO CENTER MODULE (MM)</i>	PANEL SIZE (IN) <i>SIZE (MM)</i>	UNIT WEIGHT (LBS) <i>UNIT WEIGHT (KG)</i>	WEIGHT (LBS) <i>WEIGHT (KG) PER M2</i>
	<b>8" x 60"</b> <i>203 x 1219</i>	<b>8.55" x 59.5" x 1.18"</b> <i>217 x 1206 x 30</i>	<b>33.1</b> <i>15.01</i>	<b>9.94</b> <i>48.5</i>
<b>12" x 60"</b> <i>305 x 1219</i>	<b>12.55" x 59.5" x 1.18"</b> <i>319 x 1206 x 30</i>	<b>49.7</b> <i>22.54</i>	<b>9.94</b> <i>48.5</i>	
<b>16" x 60"</b> <i>406 x 1219</i>	<b>18.55" x 59.5" x 1.18"</b> <i>471 x 1206 x 30</i>	<b>74.55</b> <i>33.81</i>	<b>9.94</b> <i>48.5</i>	
<b>24" x 60"</b> <i>609 x 1219</i>	<b>24.55" x 59.5" x 1.18"</b> <i>624 x 1206 x 30</i>	<b>99.4</b> <i>45.09</i>	<b>9.94</b> <i>48.5</i>	

### RAINSCREEN BENEFITS

- ◆ Improves structure life expectancy by protecting primary wall with second skin
- ◆ Energy savings
- ◆ Low maintenance costs
- ◆ Lightweight
- ◆ Can be installed year-round, in all weather conditions

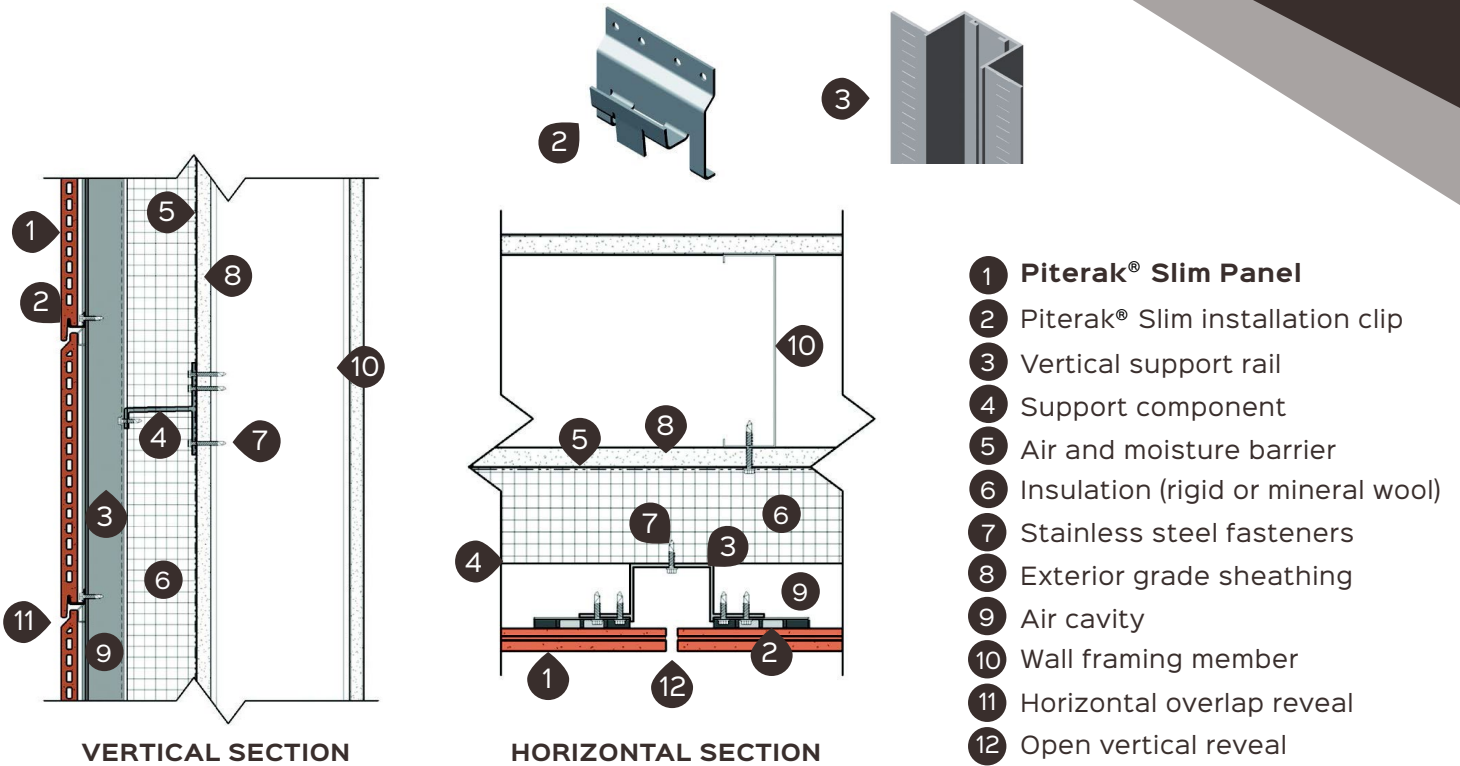
### TERRACOTTA PANEL ATTRIBUTES

- ◆ Warm, all-natural material provides superior aesthetics
- ◆ Variety of colors, textures, and sizes
- ◆ Color permanent façade
- ◆ Class A fire rated
- ◆ Sustainable material lasting 100 years
- ◆ Maintenance-free

### CERTIFICATIONS

- ◆ ASTM C67-07A Breaking Load Test (passed)
- ◆ ASTM C67-07A Efflorescence Test (passed)
- ◆ ASTM C67-07A Freeze-Thaw Test (passed)
- ◆ ASTM C67-07A Water Absorption Test (passed)

# PITERAK® SLIM INSTALLATION DETAILS



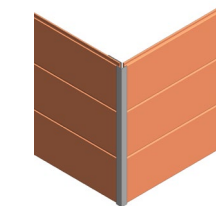
## SPECIAL SHAPES

Special shaped panels can add texture and drama to a building's facade. Additive and subtractive elements, grooves, bars, chevrons, rounded ribs, or gentle rolling curves are a sampling of the possibilities. Contact us to explore the possibilities and realize your vision.

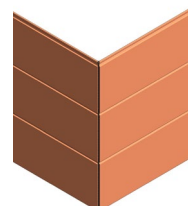


## CORNERS

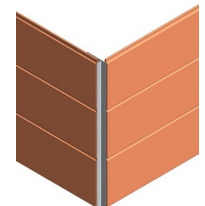
Corner systems can be configured to meet your design aesthetic.



METAL CORNER TRIM



QUIRK MITER PANELS

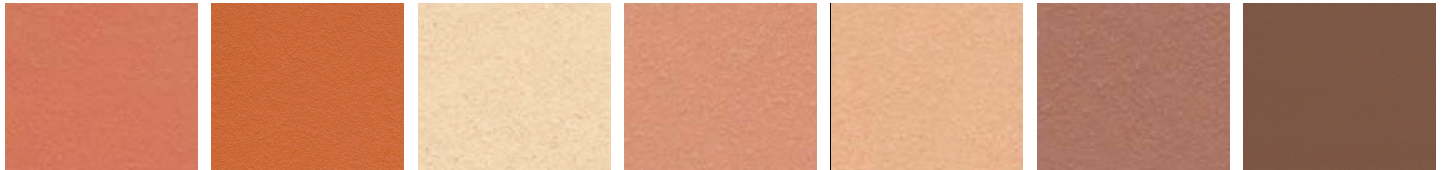


REENTRANT METAL CORNER TRIM

# COLORS AND FINISHES

Piterak Slim is available in a variety of through-body colors, custom glaze colors, and multiple finish textures. Terreal North America has custom color capabilities to meet your design needs.

## SOLA COLOR COLLECTION STANDARD THROUGH-BODY COLORS



01 Red    02 Red Orange    03 Champagne    04 Salmon    06 Sand    07 Sienna    08 Chocolate

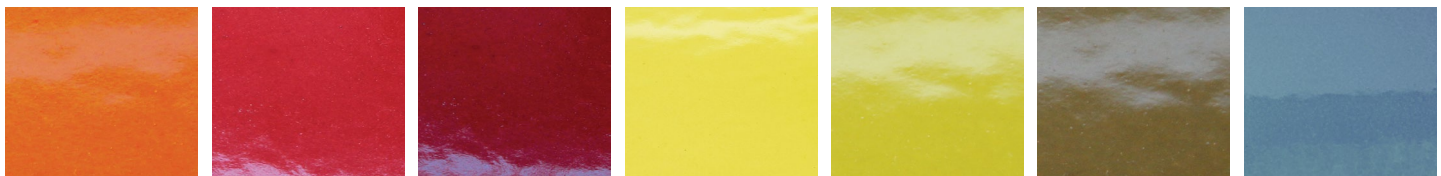


09 Coffee Brown    11 Sahara Beige    12 Light Grey    13 Storm Grey    14 Dark Grey    15 Slate Grey    16 Ebony



30 Arctic White

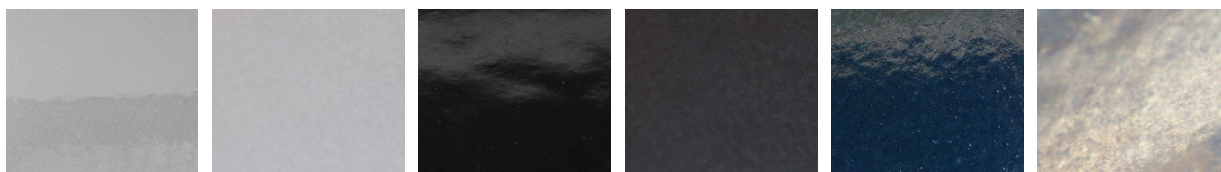
## GLAZE COLOR COLLECTION



Orange    Red    Mars Red    Yellow    Lichen    Shadow Earth    Petrol Blue



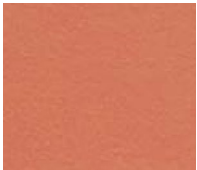
Verdigris    Green    Cobalt Blue    Violet    Calamine Pink    Glossy White    Matte White



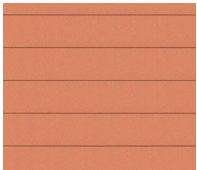
Glossy Light Grey    Matte Light Grey    Glossy Black    Matte Black    Marine Black    Steel

# COLORS AND FINISHES

## AVAILABLE PANEL FINISHES



Smooth



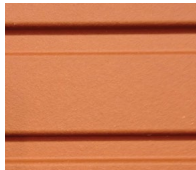
Ridged



Fine Ridged



Brushed



Grooved



Patinated



Contact a sales representative or visit [www.terrealna.com](http://www.terrealna.com) to find the Piterak® Slim product is right for you.