

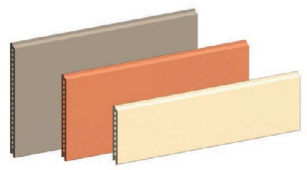


PITERAK® XS FACADES

Piterak® XS is a thin, large module double-skin terracotta rainscreen cladding system that features overlapping horizontal reveals. Piterak® XS maintains the structural performance comparable to that of thicker terracotta panels, all while providing a sleek 18mm thick, lightweight and strong double-skin profile. Piterak® XS comes in several standard sizes and a multitude of made-to-order options—with a 1'-4" maximum height and 5'-0" maximum length. Panels may be cut in the factory or by the installation contractor for specific field conditions.

Through exceptional profile engineering and state-of-the-art manufacturing, Piterak® XS is an economical panel able to maintain high wind and impact resistance ratings. These terracotta cladding panels are supported by our engineered rainscreen framing system and stainless-steel installation clips. Piterak® XS provides structural versatility and enhanced aesthetics in an economically superior terracotta rainscreen solution.

STANDARD PHYSICAL CHARACTERISTICS

|  | CENTER TO CENTER MODULE (FT) <i>CENTER TO CENTER MODULE (MM)</i> | PANEL SIZE (IN) <i>SIZE (MM)</i> | UNIT WEIGHT (LBS) <i>UNIT WEIGHT (KG)</i> | WEIGHT (LBS) <i>WEIGHT (KG) PER M2</i> |
|---|---|---|--|---|
| | 8" x 60" <i>203 x 1524</i> | 8.39" x 59.5" x .71" <i>213 x 1511 x 18</i> | 21.5 <i>9.8</i> | 6.5 <i>30.2</i> |
| 12" x 60" <i>305 x 1524</i> | 12.39" x 59.5" x .71" <i>315 x 1511 x 18</i> | 32.2 <i>14.6</i> | 6.5 <i>30.2</i> | |
| 16" x 60" <i>406 x 1524</i> | 16.39" x 59.5" x .71" <i>416 x 1511 x 18</i> | 43.0 <i>19.5</i> | 6.5 <i>30.2</i> | |

RAINSCREEN BENEFITS

- ◆ Improves structure life expectancy by protecting primary wall with second skin
- ◆ Energy savings
- ◆ Low maintenance costs
- ◆ Lightweight
- ◆ Can be installed year-round, in all weather conditions

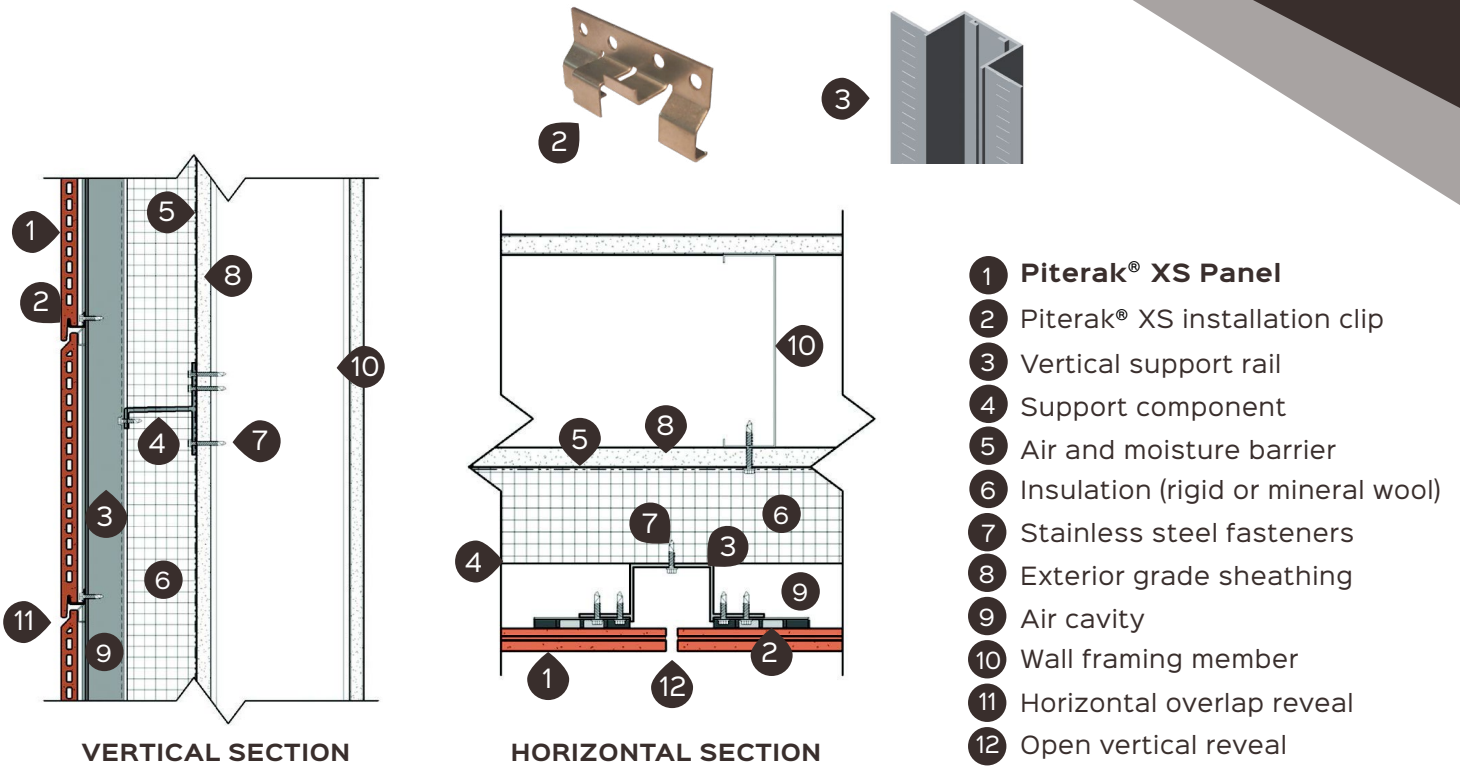
TERRACOTTA PANEL ATTRIBUTES

- ◆ Warm, all-natural material provides superior aesthetics
- ◆ Variety of colors, textures, and sizes
- ◆ Color permanent façade
- ◆ Class A fire rated
- ◆ Sustainable material lasting 100 years
- ◆ Maintenance-free

CERTIFICATIONS

- ◆ ASTM C67-07A Breaking Load Test (passed)
- ◆ ASTM C67-07A Efflorescence Test (passed)
- ◆ ASTM C67-07A Freeze-Thaw Test (passed)
- ◆ ASTM C67-07A Water Absorption Test (passed)

PITERAK® XS INSTALLATION DETAILS



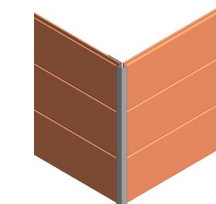
SPECIAL SHAPES

Special shaped panels can add texture and drama to a building's facade. Additive and subtractive elements, grooves, bars, chevrons, rounded ribs, or gentle rolling curves are a sampling of the possibilities. Contact us to explore the possibilities and realize your vision.

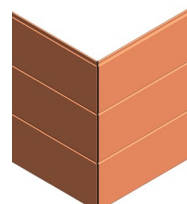


CORNERS

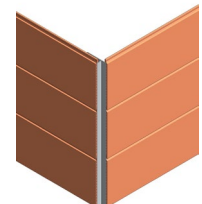
Corner systems can be configured to meet your design aesthetic.



METAL CORNER TRIM



QUIRK MITER PANELS

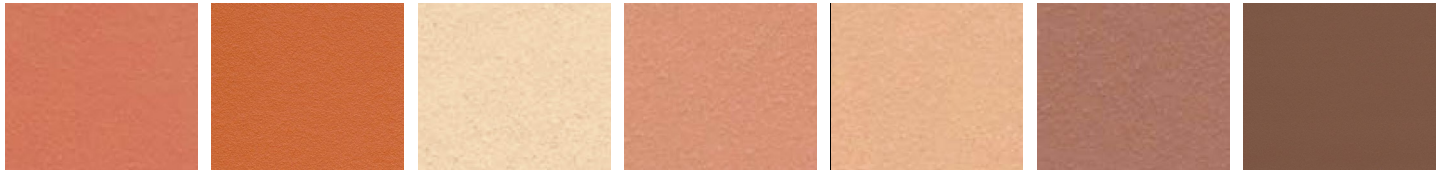


REENTRANT METAL CORNER TRIM

COLORS AND FINISHES

Piterak®XS is available in a variety of through-body colors, custom glaze colors, and multiple finish textures. Terreal North America has custom color capabilities to meet your design needs.

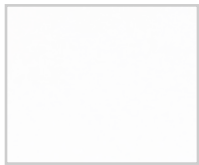
SOLA COLOR COLLECTION STANDARD THROUGH-BODY COLORS



01 Red 02 Red Orange 03 Champagne 04 Salmon 06 Sand 07 Sienna 08 Chocolate

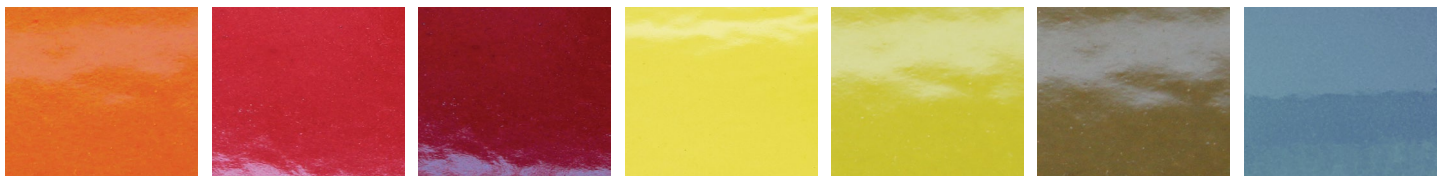


09 Coffee Brown 11 Sahara Beige 12 Light Grey 13 Storm Grey 14 Dark Grey 15 Slate Grey 16 Ebony



30 Arctic White

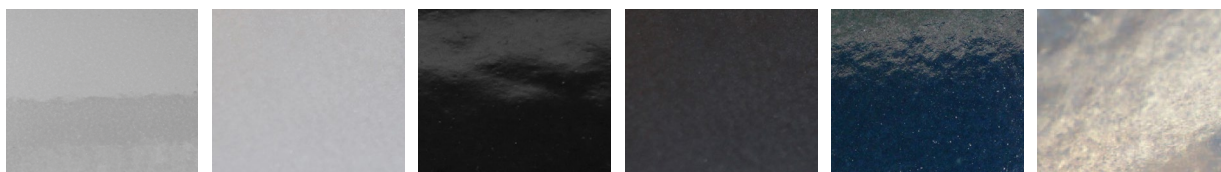
GLAZE COLOR COLLECTION



Orange Red Mars Red Yellow Lichen Shadow Earth Petrol Blue



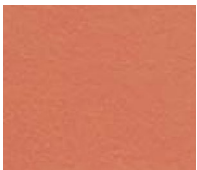
Verdigris Green Cobalt Blue Violet Calamine Pink Glossy White Matte White



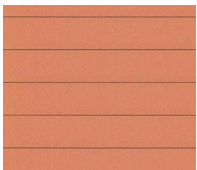
Glossy Light Grey Matte Light Grey Glossy Black Matte Black Marine Black Steel

COLORS AND FINISHES

AVAILABLE PANEL FINISHES



Smooth



Ridged



Fine Ridged



Brushed



Patinated



Contact a sales representative or visit www.terrealna.com to find the Piterak® XS product is right for you.